

Datasheet for ABIN7244645

**anti-CD1b antibody**[Go to Product page](#)**1** Image

## Overview

Quantity:	200 µL
Target:	CD1b (CD1B)
Reactivity:	Human
Host:	Rabbit
Clonality:	Polyclonal
Conjugate:	This CD1b antibody is un-conjugated
Application:	ELISA, Immunohistochemistry (IHC)

## Product Details

Immunogen:	Synthetic peptide of human CD1B
Isotype:	IgG
Characteristics:	Polyclonal Antibody
Purification:	Antigen affinity purification

## Target Details

Target:	CD1b (CD1B)
Alternative Name:	CD1B ( <a href="#">CD1B Products</a> )
Background:	CD1B (CD1b Molecule) is a Protein Coding gene. Diseases associated with CD1B include Mycobacterium Malmoense and Immune System Organ Benign Neoplasm. Among its related pathways are Immunoregulatory interactions between a Lymphoid and a non-Lymphoid cell and Innate Immune System. GO annotations related to this gene include beta-2-microglobulin

## Target Details

binding and endogenous lipid antigen binding. An important paralog of this gene is CD1C. This gene encodes a member of the CD1 family of transmembrane glycoproteins, which are structurally related to the major histocompatibility complex (MHC) proteins and form heterodimers with beta-2-microglobulin. The CD1 proteins mediate the presentation of primarily lipid and glycolipid antigens of self or microbial origin to T cells. The human genome contains five CD1 family genes organized in a cluster on chromosome 1. The CD1 family members are thought to differ in their cellular localization and specificity for particular lipid ligands. The protein encoded by this gene localizes to late endosomes and lysosomes via a tyrosine-based motif in the cytoplasmic tail, and requires vesicular acidification to bind lipid antigens.

UniProt: [P29016](#)

## Application Details

Application Notes: IHC 1:50-1:300, ELISA 1:5000-1:10000

Restrictions: For Research Use only

## Handling

Format: Liquid

Concentration: 1.4 mg/mL

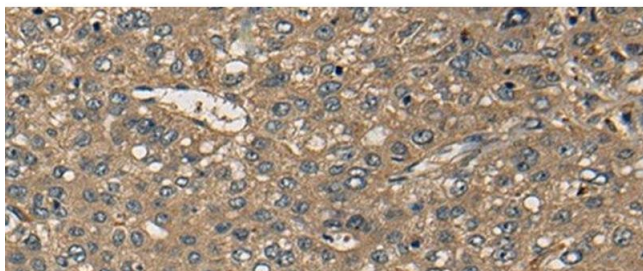
Buffer: PBS with 0.05 % Sodium azide and 40 % Glycerol, pH 7.4

Preservative: Sodium azide

Precaution of Use: This product contains Sodium azide: a POISONOUS AND HAZARDOUS SUBSTANCE which should be handled by trained staff only.

Storage: -20 °C

Storage Comment: Store at -20°C. Avoid freeze / thaw cycles.



#### Immunohistochemistry (Paraffin-embedded Sections)

**Image 1.** Immunohistochemistry of paraffin-embedded Human liver cancer tissue using CD1B Polyclonal Antibody at dilution of 1:55(x200)