

Datasheet for ABIN7244654

anti-CDT1 antibody

3 Images

[Go to Product page](#)

Overview

Quantity:	200 µL
Target:	CDT1
Reactivity:	Human
Host:	Rabbit
Clonality:	Polyclonal
Conjugate:	This CDT1 antibody is un-conjugated
Application:	Western Blotting (WB), ELISA, Immunohistochemistry (IHC)

Product Details

Immunogen:	Synthetic peptide of human CDT1
Isotype:	IgG
Characteristics:	Polyclonal Antibody
Purification:	Antigen affinity purification

Target Details

Target:	CDT1
Alternative Name:	CDT1 (CDT1 Products)
Background:	The protein encoded by this gene is involved in the formation of the pre-replication complex that is necessary for DNA replication. The encoded protein can bind geminin, which prevents replication and may function to prevent this protein from initiating replication at inappropriate origins. Phosphorylation of this protein by cyclin A-dependent kinases results in degradation of

Target Details

	the protein.
Molecular Weight:	Observed_MW: Refer to figures Calculated_MW: 60 kDa
UniProt:	Q9H211
Pathways:	MAPK Signaling , Mitotic G1-G1/S Phases , DNA Replication , Synthesis of DNA

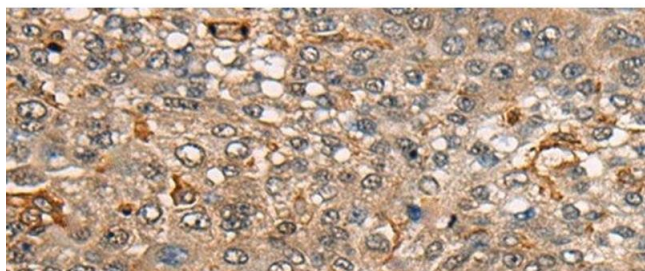
Application Details

Application Notes:	WB 1:500-1:2000, IHC 1:30-1:150, ELISA 1:5000-1:10000
Restrictions:	For Research Use only

Handling

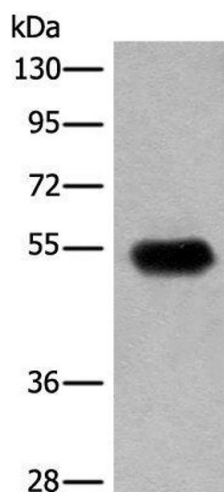
Format:	Liquid
Concentration:	0.7 mg/mL
Buffer:	PBS with 0.05 % Sodium azide and 40 % Glycerol, pH 7.4
Preservative:	Sodium azide
Precaution of Use:	This product contains Sodium azide: a POISONOUS AND HAZARDOUS SUBSTANCE which should be handled by trained staff only.
Storage:	-20 °C
Storage Comment:	Store at -20°C. Avoid freeze / thaw cycles.

Images



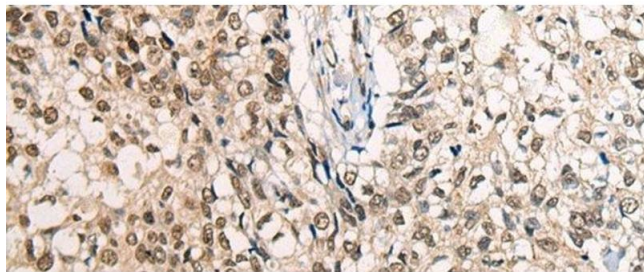
Immunohistochemistry (Paraffin-embedded Sections)

Image 1. Immunohistochemistry of paraffin-embedded Human liver cancer tissue using CDT1 Polyclonal Antibody at dilution of 1:45(x200)



Western Blotting

Image 2. Western blot analysis of Human fetal brain tissue lysate using CDT1 Polyclonal Antibody at dilution of 1:400



Immunohistochemistry (Paraffin-embedded Sections)

Image 3. Immunohistochemistry of paraffin-embedded Human lung cancer tissue using CDT1 Polyclonal Antibody at dilution of 1:45(x200)