

Datasheet for ABIN7244681  
**anti-COL17A1 antibody**[Go to Product page](#)

## 2 Images

## Overview

Quantity:	200 µL
Target:	COL17A1
Reactivity:	Human, Mouse
Host:	Rabbit
Clonality:	Polyclonal
Conjugate:	This COL17A1 antibody is un-conjugated
Application:	ELISA, Immunohistochemistry (IHC)

## Product Details

Immunogen:	Synthetic peptide of human COL17A1
Isotype:	IgG
Characteristics:	Polyclonal Antibody
Purification:	Antigen affinity purification

## Target Details

Target:	COL17A1
Alternative Name:	COL17A1 ( <a href="#">COL17A1 Products</a> )
Background:	COL17A1 (Collagen Type XVII Alpha 1 Chain) is a Protein Coding gene. Diseases associated with COL17A1 include Epidermolysis Bullosa, Junctional, Non-Herlitz Type and Epithelial Recurrent Erosion Dystrophy. Among its related pathways are Collagen chain trimerization and Phospholipase-C Pathway. An important paralog of this gene is COL6A1. This gene encodes the

## Target Details

alpha chain of type XVII collagen. Unlike most collagens, collagen XVII is a transmembrane protein. Collagen XVII is a structural component of hemidesmosomes, multiprotein complexes at the dermal-epidermal basement membrane zone that mediate adhesion of keratinocytes to the underlying membrane. Mutations in this gene are associated with both generalized atrophic benign and junctional epidermolysis bullosa. Two homotrimeric forms of type XVII collagen exist. The full length form is the transmembrane protein. A soluble form, referred to as either ectodomain or LAD-1, is generated by proteolytic processing of the full length form.

UniProt: [Q9UMD9](#)

## Application Details

Application Notes: IHC 1:50-1:200, ELISA 1:5000-1:10000

Restrictions: For Research Use only

## Handling

Format: Liquid

Concentration: 0.6 mg/mL

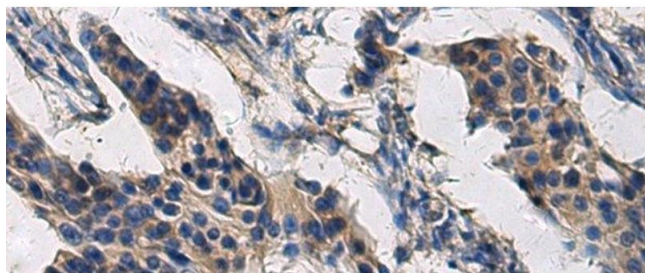
Buffer: PBS with 0.05 % Sodium azide and 40 % Glycerol, pH 7.4

Preservative: Sodium azide

Precaution of Use: This product contains Sodium azide: a POISONOUS AND HAZARDOUS SUBSTANCE which should be handled by trained staff only.

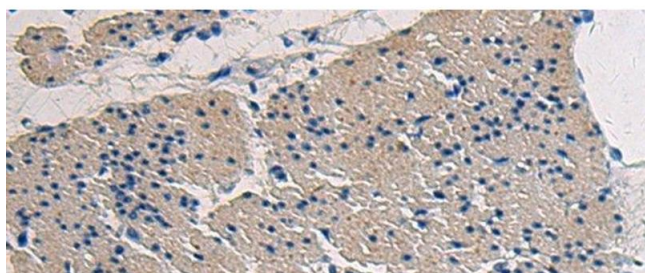
Storage: -20 °C

Storage Comment: Store at -20°C. Avoid freeze / thaw cycles.



#### Immunohistochemistry (Paraffin-embedded Sections)

**Image 1.** Immunohistochemistry of paraffin-embedded Human breast cancer tissue using COL17A1 Polyclonal Antibody at dilution of 1:50(x200)



#### Immunohistochemistry (Paraffin-embedded Sections)

**Image 2.** Immunohistochemistry of paraffin-embedded Human gastric cancer tissue using COL17A1 Polyclonal Antibody at dilution of 1:50(x200)