

Datasheet for ABIN7244684

anti-CARD16 antibody

2 Images

[Go to Product page](#)

Overview

Quantity:	200 µL
Target:	CARD16
Reactivity:	Human
Host:	Rabbit
Clonality:	Polyclonal
Conjugate:	This CARD16 antibody is un-conjugated
Application:	ELISA, Western Blotting (WB), Immunohistochemistry (IHC)

Product Details

Immunogen:	Synthetic peptide of human CARD16
Isotype:	IgG
Characteristics:	Polyclonal Antibody
Purification:	Antigen affinity purification

Target Details

Target:	CARD16
Alternative Name:	CARD16 (CARD16 Products)
Background:	Caspase inhibitor. Acts as a regulator of procaspase-1/CASP1 activation implicated in the regulation of the proteolytic maturation of pro-interleukin-1 beta (IL1B) and its release during inflammation. Inhibits the release of IL1B in response to LPS in monocytes. Also induces NF-kappa-B activation during the pro-inflammatory cytokine response. Also able to inhibit CASP1-

Target Details

mediated neuronal cell death, TNF-alpha, hypoxia-, UV-, and staurosporine-mediated cell death but not ER stress-mediated cell death. Acts by preventing activation of caspases CASP1 and CASP4, possibly by preventing the interaction between CASP1 and RIPK2.

Molecular Weight: Observed_MW: Refer to figures
Calculated_MW: 23 kDa

UniProt: [Q5EG05](#)

Application Details

Application Notes: WB 1:500-1:2000, IHC 1:40-1:200, ELISA 1:5000-1:10000

Restrictions: For Research Use only

Handling

Format: Liquid

Concentration: 1.1 mg/mL

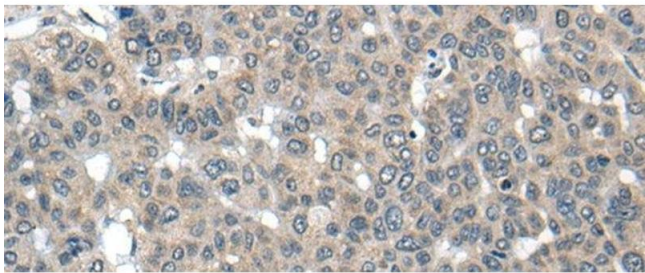
Buffer: PBS with 0.05 % Sodium azide and 40 % Glycerol, pH 7.4

Preservative: Sodium azide

Precaution of Use: This product contains Sodium azide: a POISONOUS AND HAZARDOUS SUBSTANCE which should be handled by trained staff only.

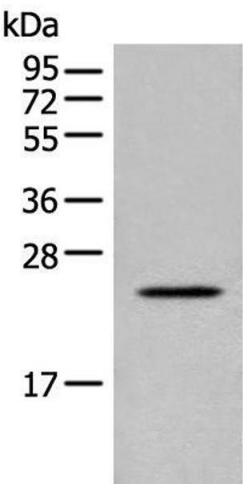
Storage: -20 °C

Storage Comment: Store at -20°C. Avoid freeze / thaw cycles.



Immunohistochemistry (Paraffin-embedded Sections)

Image 1. Immunohistochemistry of paraffin-embedded Human liver cancer tissue using CARD16 Polyclonal Antibody at dilution of 1:55(x200)



Western Blotting

Image 2. Western blot analysis of Human placenta tissue lysate using CARD16 Polyclonal Antibody at dilution of 1:800