

Datasheet for ABIN7244702
anti-EPH Receptor A6 antibody

3 Images

[Go to Product page](#)

Overview

Quantity:	200 µL
Target:	EPH Receptor A6 (Epha6)
Reactivity:	Human, Mouse, Rat
Host:	Rabbit
Clonality:	Polyclonal
Conjugate:	This EPH Receptor A6 antibody is un-conjugated
Application:	ELISA, Western Blotting (WB), Immunohistochemistry (IHC)

Product Details

Immunogen:	Synthetic peptide of human EPHA6
Isotype:	IgG
Characteristics:	Polyclonal Antibody
Purification:	Antigen affinity purification

Target Details

Target:	EPH Receptor A6 (Epha6)
Alternative Name:	EPHA6 (Epha6 Products)
Background:	Receptor tyrosine kinase which binds promiscuously GPI-anchored ephrin-A family ligands residing on adjacent cells, leading to contact-dependent bidirectional signaling into neighboring cells. The signaling pathway downstream of the receptor is referred to as forward signaling while the signaling pathway downstream of the ephrin ligand is referred to as reverse signaling.

Target Details

Molecular Weight: Observed_MW: Refer to figures
Calculated_MW: 116 kDa

UniProt: [Q9UF33](#)

Pathways: [RTK Signaling](#)

Application Details

Application Notes: WB 1:500-1:2000, IHC 1:30-1:150, ELISA 1:5000-1:10000

Restrictions: For Research Use only

Handling

Format: Liquid

Concentration: 0.8 mg/mL

Buffer: PBS with 0.05 % Sodium azide and 40 % Glycerol, pH 7.4

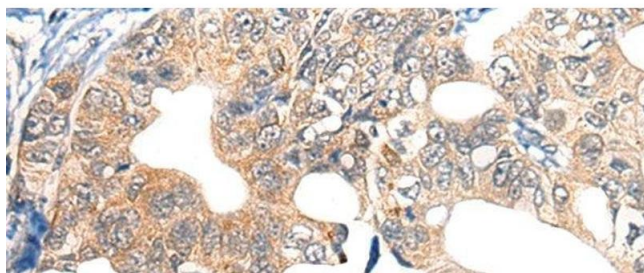
Preservative: Sodium azide

Precaution of Use: This product contains Sodium azide: a POISONOUS AND HAZARDOUS SUBSTANCE which should be handled by trained staff only.

Storage: -20 °C

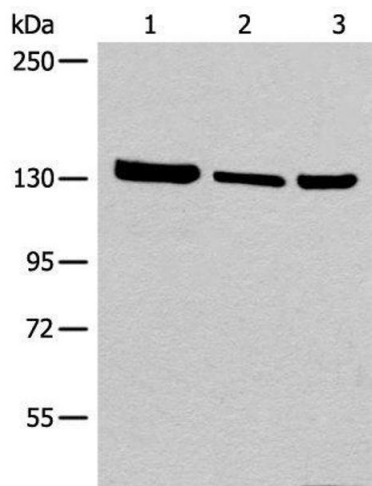
Storage Comment: Store at -20°C. Avoid freeze / thaw cycles.

Images



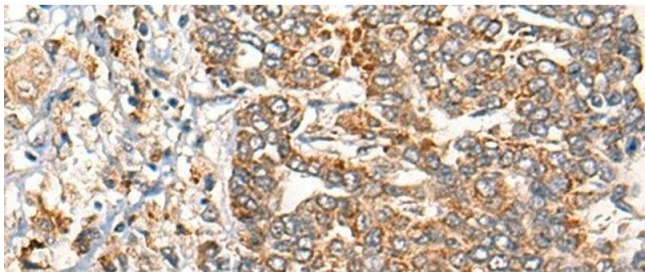
Immunohistochemistry (Paraffin-embedded Sections)

Image 1. Immunohistochemistry of paraffin-embedded Human gastric cancer tissue using EPHA6 Polyclonal Antibody at dilution of 1:40(x200)



Western Blotting

Image 2. Western blot analysis of 293T cell Human testis tissue lysate A549 cell lysates using EPHA6 Polyclonal Antibody at dilution of 1:800



Immunohistochemistry (Paraffin-embedded Sections)

Image 3. Immunohistochemistry of paraffin-embedded Human liver cancer tissue using EPHA6 Polyclonal Antibody at dilution of 1:40(x200)