

Datasheet for ABIN7244732

anti-PRPF8 antibody[Go to Product page](#)**1** Image

Overview

Quantity:	200 µL
Target:	PRPF8
Reactivity:	Human, Mouse
Host:	Rabbit
Clonality:	Polyclonal
Conjugate:	This PRPF8 antibody is un-conjugated
Application:	Western Blotting (WB), ELISA

Product Details

Immunogen:	Synthetic peptide of human PRPF8
Isotype:	IgG
Characteristics:	Polyclonal Antibody
Purification:	Antigen affinity purification

Target Details

Target:	PRPF8
Alternative Name:	PRPF8 (PRPF8 Products)
Background:	Pre-mRNA splicing occurs in 2 sequential transesterification steps. The protein encoded by this gene is a component of both U2- and U12-dependent spliceosomes, and found to be essential for the catalytic step II in pre-mRNA splicing process. It contains several WD repeats, which function in protein-protein interactions. This protein has a sequence similarity to yeast Prp8

Target Details

	protein. This gene is a candidate gene for autosomal dominant retinitis pigmentosa.
Molecular Weight:	Observed_MW: Refer to figures Calculated_MW: 274 kDa
UniProt:	Q6P2Q9

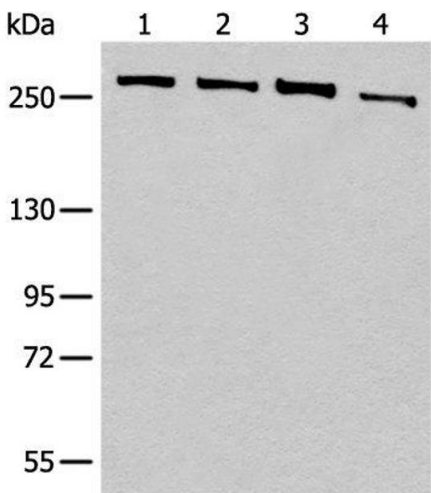
Application Details

Application Notes:	WB 1:500-1:2000, ELISA 1:5000-1:10000
Restrictions:	For Research Use only

Handling

Format:	Liquid
Concentration:	0.5 mg/mL
Buffer:	PBS with 0.05 % Sodium azide and 40 % Glycerol, pH 7.4
Preservative:	Sodium azide
Precaution of Use:	This product contains Sodium azide: a POISONOUS AND HAZARDOUS SUBSTANCE which should be handled by trained staff only.
Storage:	-20 °C
Storage Comment:	Store at -20°C. Avoid freeze / thaw cycles.

Images



Western Blotting

Image 1. Western blot analysis of 293T cell lysates using PRPF8 Polyclonal Antibody at dilution of 1:450