

Datasheet for ABIN7244735

**anti-C6orf150 antibody**[Go to Product page](#)**1** Image

## Overview

Quantity:	200 µL
Target:	C6orf150
Reactivity:	Human
Host:	Rabbit
Clonality:	Polyclonal
Conjugate:	This C6orf150 antibody is un-conjugated
Application:	Western Blotting (WB), ELISA

## Product Details

Immunogen:	Synthetic peptide of human MB21D1
Isotype:	IgG
Characteristics:	Polyclonal Antibody
Purification:	Antigen affinity purification

## Target Details

Target:	C6orf150
Alternative Name:	CGAS ( <a href="#">C6orf150 Products</a> )
Background:	<p>Nucleotidyltransferase that catalyzes the formation of cyclic GMP-AMP (cGAMP) from ATP and GTP. Catalysis involves both the formation of a 2',5' phosphodiester linkage at the GpA step and the formation of a 3',5' phosphodiester linkage at the ApG step, producing c[G(2',5')pA(3',5')p].</p> <p>Has antiviral activity by acting as a key cytosolic DNA sensor, the presence of double-stranded</p>

## Target Details

DNA (dsDNA) in the cytoplasm being a danger signal that triggers the immune responses. Binds cytosolic DNA directly, leading to activation and synthesis of cGAMP, a second messenger that binds to and activates TMEM173/STING, thereby triggering type-I interferon production. cGAMP can be transferred between cells by virtue of packaging within viral particles contributing to IFN-induction in newly infected cells in a cGAS-independent but TMEM173/STING-dependent manner (PubMed:26229115).

Molecular Weight: Observed\_MW: Refer to figures  
Calculated\_MW: 59 kDa

UniProt: [Q8N884](#)

Pathways: [Activation of Innate immune Response](#)

## Application Details

Application Notes: WB 1:500-1:2000, ELISA 1:5000-1:10000

Restrictions: For Research Use only

## Handling

Format: Liquid

Concentration: 0.78 mg/mL

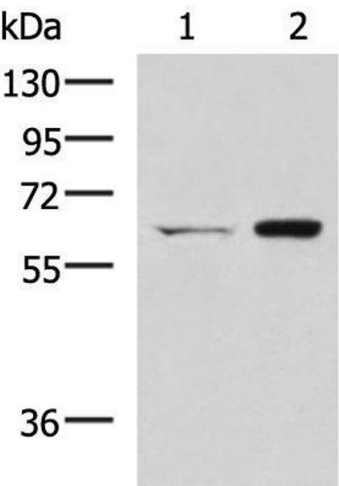
Buffer: PBS with 0.05 % Sodium azide and 40 % Glycerol, pH 7.4

Preservative: Sodium azide

Precaution of Use: This product contains Sodium azide: a POISONOUS AND HAZARDOUS SUBSTANCE which should be handled by trained staff only.

Storage: -20 °C

Storage Comment: Store at -20°C. Avoid freeze / thaw cycles.



Western Blotting

**Image 1.** Western blot analysis of HT-29 and Lovo cell lysates using CGAS Polyclonal Antibody at dilution of 1:400