

Datasheet for ABIN7244759
anti-NOL8 antibody



[Go to Product page](#)

1 Image

Overview

| | |
|--------------|-------------------------------------|
| Quantity: | 200 µL |
| Target: | NOL8 |
| Reactivity: | Human |
| Host: | Rabbit |
| Clonality: | Polyclonal |
| Conjugate: | This NOL8 antibody is un-conjugated |
| Application: | ELISA, Immunohistochemistry (IHC) |

Product Details

| | |
|------------------|---------------------------------|
| Immunogen: | Synthetic peptide of human NOL8 |
| Isotype: | IgG |
| Characteristics: | Polyclonal Antibody |
| Purification: | Antigen affinity purification |

Target Details

| | |
|-------------------|--|
| Target: | NOL8 |
| Alternative Name: | NOL8 (NOL8 Products) |
| Background: | NOL8 binds Ras-related GTP-binding proteins (see MIM 608267) and plays a role in cell growth. Plays an essential role in the survival of diffuse-type gastric cancer cells. Acts as a nucleolar anchoring protein for DDX47. May be involved in regulation of gene expression at the post-transcriptional level or in ribosome biogenesis in cancer cells. |

Target Details

UniProt: [Q76FK4](#)

Application Details

Application Notes: IHC 1:30-1:150, ELISA 1:5000-1:10000

Restrictions: For Research Use only

Handling

Format: Liquid

Concentration: 2.1 mg/mL

Buffer: PBS with 0.05 % Sodium azide and 40 % Glycerol, pH 7.4

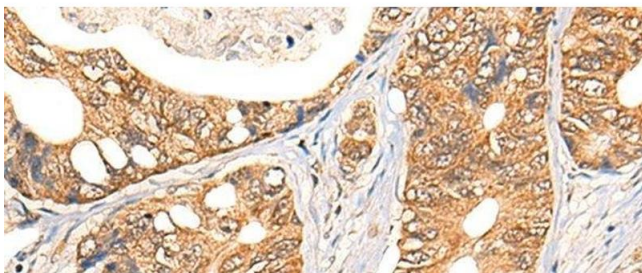
Preservative: Sodium azide

Precaution of Use: This product contains Sodium azide: a POISONOUS AND HAZARDOUS SUBSTANCE which should be handled by trained staff only.

Storage: -20 °C

Storage Comment: Store at -20°C. Avoid freeze / thaw cycles.

Images



Immunohistochemistry (Paraffin-embedded Sections)

Image 1. Immunohistochemistry of paraffin-embedded Human gastric cancer tissue using NOL8 Polyclonal Antibody at dilution of 1:40(x200)