

Datasheet for ABIN7244765
anti-Regucalcin antibody

2 Images

[Go to Product page](#)

Overview

Quantity:	200 µL
Target:	Regucalcin (RGN)
Reactivity:	Human, Rat, Mouse
Host:	Rabbit
Clonality:	Polyclonal
Conjugate:	This Regucalcin antibody is un-conjugated
Application:	Western Blotting (WB), ELISA, Immunohistochemistry (IHC)

Product Details

Immunogen:	Synthetic peptide of human RGN
Isotype:	IgG
Characteristics:	Polyclonal Antibody
Purification:	Antigen affinity purification

Target Details

Target:	Regucalcin (RGN)
Alternative Name:	RGN (RGN Products)
Background:	The protein encoded by this gene is a highly conserved, calcium-binding protein, that is preferentially expressed in the liver and kidney. It may have an important role in calcium homeostasis. Studies in rat indicate that this protein may also play a role in aging, as it shows age-associated down-regulation. This gene is part of a gene cluster on chromosome Xp11.3-

Target Details

Xp11.23. Alternative splicing results in multiple transcript variants.

Molecular Weight: Observed_MW: Refer to figures
Calculated_MW: 33 kDa

UniProt: [Q15493](#)

Application Details

Application Notes: WB 1:500-1:2000, IHC 1:25-1:100, ELISA 1:5000-1:10000

Restrictions: For Research Use only

Handling

Format: Liquid

Concentration: 0.7 mg/mL

Buffer: PBS with 0.05 % Sodium azide and 40 % Glycerol, pH 7.4

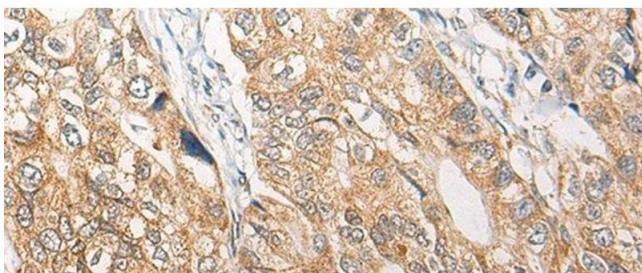
Preservative: Sodium azide

Precaution of Use: This product contains Sodium azide: a POISONOUS AND HAZARDOUS SUBSTANCE which should be handled by trained staff only.

Storage: -20 °C

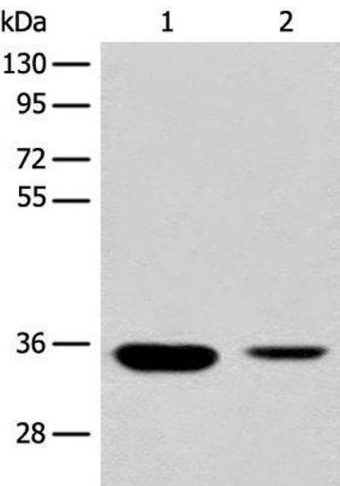
Storage Comment: Store at -20°C. Avoid freeze / thaw cycles.

Images



Immunohistochemistry (Paraffin-embedded Sections)

Image 1. Immunohistochemistry of paraffin-embedded Human gastric cancer tissue using RGN Polyclonal Antibody at dilution of 1:25(x200)



Western Blotting

Image 2. Western blot analysis of Mouse liver tissue and Human fetal liver tissue lysates using RGN Polyclonal Antibody at dilution of 1:500