

Datasheet for ABIN7244774

anti-CCL5 antibody**2** Images[Go to Product page](#)

Overview

| | |
|--------------|-------------------------------------|
| Quantity: | 200 µL |
| Target: | CCL5 |
| Reactivity: | Human, Mouse, Rat |
| Host: | Rabbit |
| Clonality: | Polyclonal |
| Conjugate: | This CCL5 antibody is un-conjugated |
| Application: | ELISA, Immunohistochemistry (IHC) |

Product Details

| | |
|------------------|---------------------------------|
| Immunogen: | Synthetic peptide of human CCL5 |
| Isotype: | IgG |
| Characteristics: | Polyclonal Antibody |
| Purification: | Antigen affinity purification |

Target Details

| | |
|-------------------|--|
| Target: | CCL5 |
| Alternative Name: | CCL5 (CCL5 Products) |
| Background: | <p>This gene is one of several chemokine genes clustered on the q-arm of chromosome 17. Chemokines form a superfamily of secreted proteins involved in immunoregulatory and inflammatory processes. The superfamily is divided into four subfamilies based on the arrangement of the N-terminal cysteine residues of the mature peptide. This chemokine, a</p> |

Target Details

member of the CC subfamily, functions as a chemoattractant for blood monocytes, memory T helper cells and eosinophils. It causes the release of histamine from basophils and activates eosinophils. This cytokine is one of the major HIV-suppressive factors produced by CD8+ cells. It functions as one of the natural ligands for the chemokine receptor chemokine (C-C motif) receptor 5 (CCR5), and it suppresses in vitro replication of the R5 strains of HIV-1, which use CCR5 as a coreceptor. Alternative splicing results in multiple transcript variants that encode different isoforms.

UniProt: [P13501](#)

Pathways: [Cellular Response to Molecule of Bacterial Origin](#), [Regulation of G-Protein Coupled Receptor Protein Signaling](#), [Smooth Muscle Cell Migration](#)

Application Details

Application Notes: IHC 1:40-1:200, ELISA 1:5000-1:10000

Restrictions: For Research Use only

Handling

Format: Liquid

Concentration: 2 mg/mL

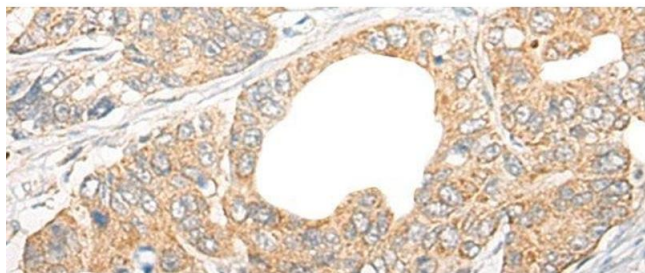
Buffer: PBS with 0.05 % Sodium azide and 40 % Glycerol, pH 7.4

Preservative: Sodium azide

Precaution of Use: This product contains Sodium azide: a POISONOUS AND HAZARDOUS SUBSTANCE which should be handled by trained staff only.

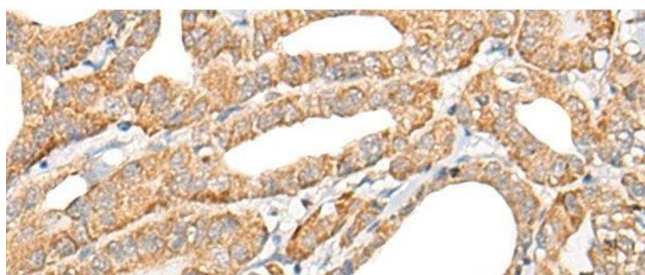
Storage: -20 °C

Storage Comment: Store at -20°C. Avoid freeze / thaw cycles.



Immunohistochemistry (Paraffin-embedded Sections)

Image 1. Immunohistochemistry of paraffin-embedded Human gastric cancer tissue using CCL5 Polyclonal Antibody at dilution of 1:50(x200)



Immunohistochemistry (Paraffin-embedded Sections)

Image 2. Immunohistochemistry of paraffin-embedded Human thyroid cancer tissue using CCL5 Polyclonal Antibody at dilution of 1:50(x200)