

Datasheet for ABIN7244786
anti-CYB5D1 antibody



[Go to Product page](#)

2 Images

Overview

Quantity:	200 µL
Target:	CYB5D1
Reactivity:	Human, Mouse
Host:	Rabbit
Clonality:	Polyclonal
Conjugate:	This CYB5D1 antibody is un-conjugated
Application:	Western Blotting (WB), ELISA, Immunohistochemistry (IHC)

Product Details

Immunogen:	Synthetic peptide of human CYB5D1
Isotype:	IgG
Characteristics:	Polyclonal Antibody
Purification:	Antigen affinity purification

Target Details

Target:	CYB5D1
Alternative Name:	CYB5D1 (CYB5D1 Products)
Background:	CYB5D1 (Cytochrome B5 Domain Containing 1) is a Protein Coding gene. Gene Ontology (GO) annotations related to this gene include heme binding.
Molecular Weight:	Observed_MW: Refer to figures

Target Details

Calculated_MW: 27 kDa

UniProt: [Q6P9G0](#)

Application Details

Application Notes: WB 1:500-1:2000, IHC 1:40-1:200, ELISA 1:5000-1:10000

Restrictions: For Research Use only

Handling

Format: Liquid

Concentration: 1.4 mg/mL

Buffer: PBS with 0.05 % Sodium azide and 40 % Glycerol, pH 7.4

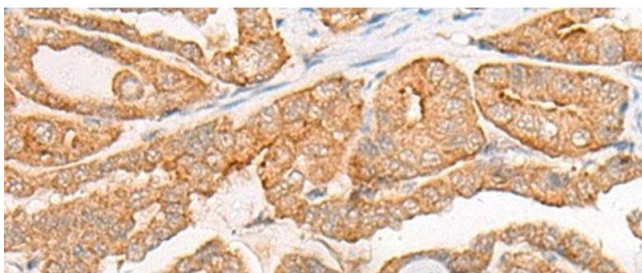
Preservative: Sodium azide

Precaution of Use: This product contains Sodium azide: a POISONOUS AND HAZARDOUS SUBSTANCE which should be handled by trained staff only.

Storage: -20 °C

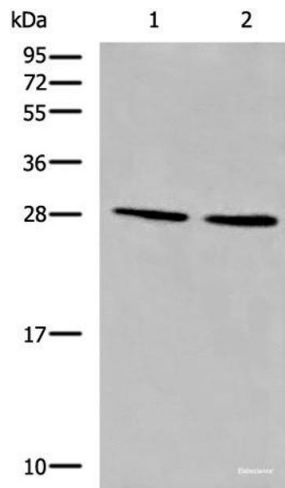
Storage Comment: Store at -20°C. Avoid freeze / thaw cycles.

Images



Immunohistochemistry (Paraffin-embedded Sections)

Image 1. Immunohistochemistry of paraffin-embedded Human thyroid cancer tissue using CYB5D1 Polyclonal Antibody at dilution of 1:45(x200)



Western Blotting

Image 2. Western blot analysis of LOVO and 231 cell lysates using CYB5D1 Polyclonal Antibody at dilution of 1:650