



[Go to Product page](#)

Datasheet for ABIN7244810
anti-DROSHA antibody

1 Image

Overview

Quantity:	200 µL
Target:	DROSHA
Reactivity:	Human, Mouse
Host:	Rabbit
Clonality:	Polyclonal
Conjugate:	This DROSHA antibody is un-conjugated
Application:	ELISA, Immunohistochemistry (IHC)

Product Details

Immunogen:	Synthetic peptide of human DROSHA
Isotype:	IgG
Characteristics:	Polyclonal Antibody
Purification:	Antigen affinity purification

Target Details

Target:	DROSHA
Alternative Name:	DROSHA (DROSHA Products)
Background:	This gene encodes a ribonuclease (RNase) III double-stranded RNA-specific ribonuclease and subunit of the microprocessor protein complex, which catalyzes the initial processing step of microRNA (miRNA) synthesis. The encoded protein cleaves the stem loop structure from the primary microRNA (pri-miRNA) in the nucleus, yielding the precursor miRNA (pre-miRNA), which

Target Details

is then exported to the cytoplasm for further processing. In a human cell line lacking a functional copy of this gene, canonical miRNA synthesis is reduced. Somatic mutations in this gene have been observed in human patients with kidney cancer. DROSHA (Drosha Ribonuclease III) is a Protein Coding gene. Diseases associated with DROSHA include Combat Disorder and Murray Valley Encephalitis. Among its related pathways are mRNA Capping and Gene Expression. GO annotations related to this gene include poly(A) RNA binding and RNA binding.

UniProt: [Q9NRR4](#)

Pathways: [Regulatory RNA Pathways](#)

Application Details

Application Notes: IHC 1:30-1:150, ELISA 1:5000-1:10000

Restrictions: For Research Use only

Handling

Format: Liquid

Concentration: 1.74 mg/mL

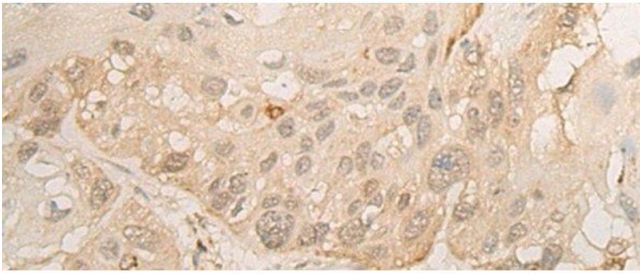
Buffer: PBS with 0.05 % Sodium azide and 40 % Glycerol, pH 7.4

Preservative: Sodium azide

Precaution of Use: This product contains Sodium azide: a POISONOUS AND HAZARDOUS SUBSTANCE which should be handled by trained staff only.

Storage: -20 °C

Storage Comment: Store at -20°C. Avoid freeze / thaw cycles.



Immunohistochemistry (Paraffin-embedded Sections)

Image 1. Immunohistochemistry of paraffin-embedded Human esophagus cancer tissue using DROSHA Polyclonal Antibody at dilution of 1:45(x200)