



## Datasheet for ABIN7244816 anti-DUOX2 antibody



[Go to Product page](#)

### 1 Image

#### Overview

Quantity:	200 µL
Target:	DUOX2
Reactivity:	Human, Rat
Host:	Rabbit
Clonality:	Polyclonal
Conjugate:	This DUOX2 antibody is un-conjugated
Application:	ELISA, Immunohistochemistry (IHC)

#### Product Details

Immunogen:	Synthetic peptide of human DUOX2
Isotype:	IgG
Characteristics:	Polyclonal Antibody
Purification:	Antigen affinity purification

#### Target Details

Target:	DUOX2
Alternative Name:	DUOX2 ( <a href="#">DUOX2 Products</a> )
Background:	The protein encoded by this gene is a glycoprotein and a member of the NADPH oxidase family. The synthesis of thyroid hormone is catalyzed by a protein complex located at the apical membrane of thyroid follicular cells. This complex contains an iodide transporter, thyroperoxidase, and a peroxide generating system that includes this encoded protein and

## Target Details

DUOX1. This protein is known as dual oxidase because it has both a peroxidase homology domain and a gp91phox domain.

UniProt: [Q9NRD8](#)

Pathways: [Thyroid Hormone Synthesis](#)

## Application Details

Application Notes: IHC 1:30-1:150, ELISA 1:5000-1:10000

Restrictions: For Research Use only

## Handling

Format: Liquid

Concentration: 1.56 mg/mL

Buffer: PBS with 0.05 % Sodium azide and 40 % Glycerol, pH 7.4

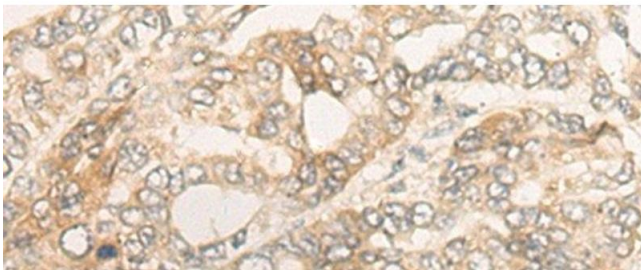
Preservative: Sodium azide

Precaution of Use: This product contains Sodium azide: a POISONOUS AND HAZARDOUS SUBSTANCE which should be handled by trained staff only.

Storage: -20 °C

Storage Comment: Store at -20°C. Avoid freeze / thaw cycles.

## Images



### Immunohistochemistry (Paraffin-embedded Sections)

**Image 1.** Immunohistochemistry of paraffin-embedded Human liver cancer tissue using DUOX2 Polyclonal Antibody at dilution of 1:40(x200)