

Datasheet for ABIN7244822

anti-EHD1 antibody[Go to Product page](#)**1** Image

Overview

Quantity:	200 µL
Target:	EHD1
Reactivity:	Human, Rat, Mouse
Host:	Rabbit
Clonality:	Polyclonal
Conjugate:	This EHD1 antibody is un-conjugated
Application:	Western Blotting (WB), ELISA

Product Details

Immunogen:	Synthetic peptide of human EHD1
Isotype:	IgG
Characteristics:	Polyclonal Antibody
Purification:	Antigen affinity purification

Target Details

Target:	EHD1
Alternative Name:	EHD1 (EHD1 Products)
Background:	This gene belongs to a highly conserved gene family encoding EPS15 homology (EH) domain-containing proteins. The protein-binding EH domain was first noted in EPS15, a substrate for the epidermal growth factor receptor. The EH domain has been shown to be an important motif in proteins involved in protein-protein interactions and in intracellular sorting. The protein

Target Details

encoded by this gene is thought to play a role in the endocytosis of IGF1 receptors. Alternatively spliced transcript variants have been found for this gene.

Molecular Weight: Observed_MW: Refer to figures
Calculated_MW: 61 kDa

UniProt: [Q9H4M9](#)

Pathways: [Regulation of Muscle Cell Differentiation, Skeletal Muscle Fiber Development](#)

Application Details

Application Notes: WB 1:500-1:2000, ELISA 1:5000-1:10000

Restrictions: For Research Use only

Handling

Format: Liquid

Concentration: 1.26 mg/mL

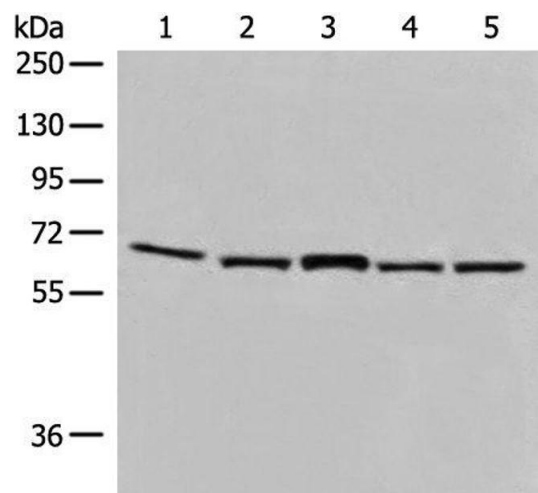
Buffer: PBS with 0.05 % Sodium azide and 40 % Glycerol, pH 7.4

Preservative: Sodium azide

Precaution of Use: This product contains Sodium azide: a POISONOUS AND HAZARDOUS SUBSTANCE which should be handled by trained staff only.

Storage: -20 °C

Storage Comment: Store at -20°C. Avoid freeze / thaw cycles.



Western Blotting

Image 1. Western blot analysis of TM4 and 231 cell Mouse brain tissue Hela and HT-29 cell lysates using EHD1 Polyclonal Antibody at dilution of 1:500