



[Go to Product page](#)

Datasheet for ABIN7244843

## anti-EPST11 antibody

### 2 Images

#### Overview

Quantity:	200 µL
Target:	EPST11
Reactivity:	Human
Host:	Rabbit
Clonality:	Polyclonal
Conjugate:	This EPST11 antibody is un-conjugated
Application:	ELISA, Immunohistochemistry (IHC)

#### Product Details

Immunogen:	Synthetic peptide of human EPST11
Isotype:	IgG
Characteristics:	Polyclonal Antibody
Purification:	Antigen affinity purification

#### Target Details

Target:	EPST11
Alternative Name:	EPST11 ( <a href="#">EPST11 Products</a> )
Background:	EPST11 (Epithelial-stromal interaction protein 1), also known as BRES11, is a 318 amino acid protein that is highly expressed in spleen, placenta, small intestine, liver, kidney, thymus, testis and salivary gland. Existing as three isoforms that are formed due to alternative splicing events, EPST11 is weakly expressed in normal breast tissue, but is heavily up-regulated in breast

## Target Details

---

carcinoma, suggesting an important role for EPSTI1 in tumor formation and/or progression. Additionally, EPSTI1 is found in blood cells from systemic lupus erythematosus (SLE)-afflicted patients, implicating EPSTI1 as a potential protein involved in SLE.

UniProt: [Q96J88](#)

## Application Details

---

Application Notes: IHC 1:30-1:150, ELISA 1:5000-1:10000

Restrictions: For Research Use only

## Handling

---

Format: Liquid

Concentration: 0.66 mg/mL

Buffer: PBS with 0.05 % Sodium azide and 40 % Glycerol, pH 7.4

Preservative: Sodium azide

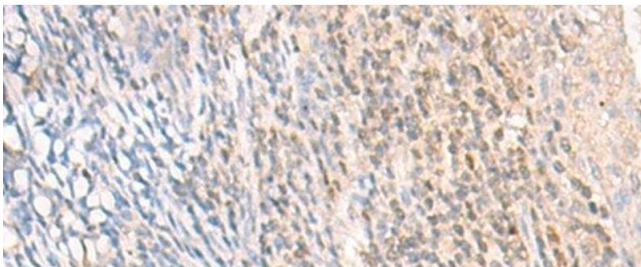
Precaution of Use: This product contains Sodium azide: a POISONOUS AND HAZARDOUS SUBSTANCE which should be handled by trained staff only.

Storage: -20 °C

Storage Comment: Store at -20°C. Avoid freeze / thaw cycles.

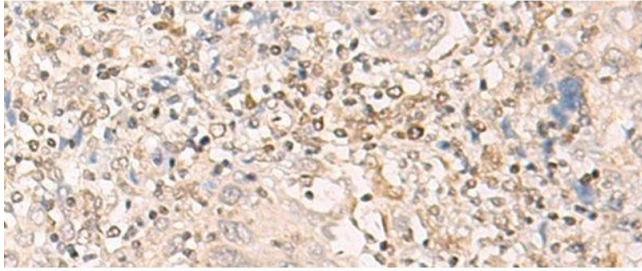
## Images

---



### Immunohistochemistry (Paraffin-embedded Sections)

**Image 1.** Immunohistochemistry of paraffin-embedded Human tonsil tissue using EPSTI1 Polyclonal Antibody at dilution of 1:25(x200)



### Immunohistochemistry (Paraffin-embedded Sections)

**Image 2.** Immunohistochemistry of paraffin-embedded Human cervical cancer tissue using EPST11 Polyclonal Antibody at dilution of 1:25(x200)