

Datasheet for ABIN7244855

**anti-MYDGF antibody**[Go to Product page](#)**2** Images

## Overview

Quantity:	200 µL
Target:	MYDGF (D17Wsu104e)
Reactivity:	Human, Mouse
Host:	Rabbit
Clonality:	Polyclonal
Conjugate:	This MYDGF antibody is un-conjugated
Application:	Western Blotting (WB), ELISA, Immunohistochemistry (IHC)

## Product Details

Immunogen:	Synthetic peptide of human MYDGF
Isotype:	IgG
Characteristics:	Polyclonal Antibody
Purification:	Antigen affinity purification

## Target Details

Target:	MYDGF (D17Wsu104e)
Alternative Name:	MYDGF ( <a href="#">D17Wsu104e Products</a> )
Background:	The protein encoded by this gene was previously thought to support proliferation of lymphoid cells and was considered an interleukin. However, this activity has not been reproducible and the function of this protein is currently unknown.

## Target Details

Molecular Weight:	Observed_MW: Refer to figures Calculated_MW: 19 kDa
-------------------	--

UniProt:	<a href="#">Q969H8</a>
----------	------------------------

## Application Details

Application Notes:	WB 1:500-1:2000, IHC 1:30-1:150, ELISA 1:5000-1:10000
--------------------	---

Restrictions:	For Research Use only
---------------	-----------------------

## Handling

Format:	Liquid
---------	--------

Concentration:	0.66 mg/mL
----------------	------------

Buffer:	PBS with 0.05 % Sodium azide and 40 % Glycerol, pH 7.4
---------	--

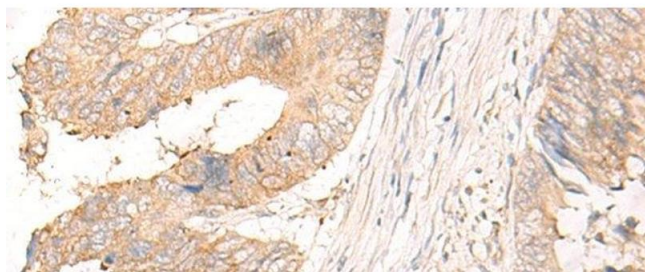
Preservative:	Sodium azide
---------------	--------------

Precaution of Use:	This product contains Sodium azide: a POISONOUS AND HAZARDOUS SUBSTANCE which should be handled by trained staff only.
--------------------	--

Storage:	-20 °C
----------	--------

Storage Comment:	Store at -20°C. Avoid freeze / thaw cycles.
------------------	---

## Images



### Immunohistochemistry (Paraffin-embedded Sections)

**Image 1.** Immunohistochemistry of paraffin-embedded Human colorectal cancer tissue using MYDGF Polyclonal Antibody at dilution of 1:25(x200)

