

Datasheet for ABIN7244864
anti-SLC25A27 antibody[Go to Product page](#)

2 Images

Overview

Quantity:	200 µL
Target:	SLC25A27
Reactivity:	Human, Rat, Mouse
Host:	Rabbit
Clonality:	Polyclonal
Conjugate:	This SLC25A27 antibody is un-conjugated
Application:	Western Blotting (WB), ELISA, Immunohistochemistry (IHC)

Product Details

Immunogen:	Synthetic peptide of human SLC25A27
Isotype:	IgG
Characteristics:	Polyclonal Antibody
Purification:	Antigen affinity purification

Target Details

Target:	SLC25A27
Alternative Name:	SLC25A27 (SLC25A27 Products)
Background:	Mitochondrial uncoupling proteins (UCP) are members of the larger family of mitochondrial anion carrier proteins (MACP). UCPs separate oxidative phosphorylation from ATP synthesis with energy dissipated as heat, also referred to as the mitochondrial proton leak. UCPs facilitate the transfer of anions from the inner to the outer mitochondrial membrane and the return

Target Details

transfer of protons from the outer to the inner mitochondrial membrane. They also reduce the mitochondrial membrane potential in mammalian cells. Tissue specificity occurs for the different UCPs and the exact methods of how UCPs transfer H⁺/OH⁻ are not known. UCPs contain the three homologous protein domains of MACPs. Transcripts of this gene are only detected in brain tissue and are specifically modulated by various environmental conditions. Alternative splicing results in multiple transcript variants.

Molecular Weight:	Observed_MW: Refer to figures Calculated_MW: 36 kDa
-------------------	--

UniProt:	O95847
----------	------------------------

Application Details

Application Notes:	WB 1:500-1:2000, IHC 1:20-1:100, ELISA 1:5000-1:10000
--------------------	---

Restrictions:	For Research Use only
---------------	-----------------------

Handling

Format:	Liquid
---------	--------

Concentration:	0.9 mg/mL
----------------	-----------

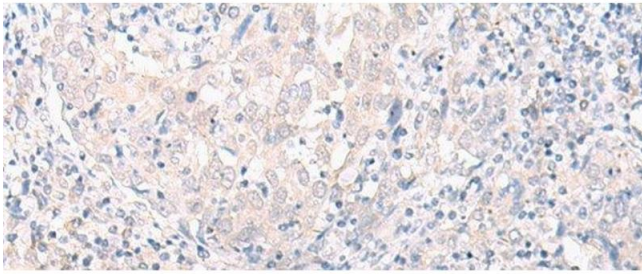
Buffer:	PBS with 0.05 % Sodium azide and 40 % Glycerol, pH 7.4
---------	--

Preservative:	Sodium azide
---------------	--------------

Precaution of Use:	This product contains Sodium azide: a POISONOUS AND HAZARDOUS SUBSTANCE which should be handled by trained staff only.
--------------------	--

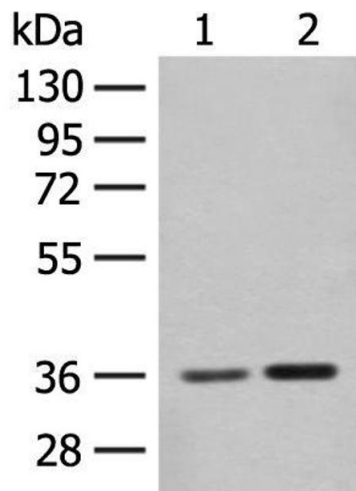
Storage:	-20 °C
----------	--------

Storage Comment:	Store at -20°C. Avoid freeze / thaw cycles.
------------------	---



Immunohistochemistry (Paraffin-embedded Sections)

Image 1. Immunohistochemistry of paraffin-embedded Human cervical cancer tissue using SLC25A27 Polyclonal Antibody at dilution of 1:30(x200)



Western Blotting

Image 2. Western blot analysis of Mouse brain tissue and Rat brain tissue lysates using SLC25A27 Polyclonal Antibody at dilution of 1:350