

Datasheet for ABIN7244873

**anti-EPS15 antibody****2** Images[Go to Product page](#)

## Overview

Quantity:	200 µL
Target:	EPS15
Reactivity:	Human, Mouse
Host:	Rabbit
Clonality:	Polyclonal
Conjugate:	This EPS15 antibody is un-conjugated
Application:	ELISA, Immunohistochemistry (IHC)

## Product Details

Immunogen:	Synthetic peptide of human EPS15
Isotype:	IgG
Characteristics:	Polyclonal Antibody
Purification:	Antigen affinity purification

## Target Details

Target:	EPS15
Alternative Name:	EPS15 ( <a href="#">EPS15 Products</a> )
Background:	This gene encodes a protein that is part of the EGFR pathway. The protein is present at clathrin-coated pits and is involved in receptor-mediated endocytosis of EGF. Notably, this gene is rearranged with the HRX/ALL/MLL gene in acute myelogenous leukemias. Alternative splicing results in multiple transcript variants encoding distinct isoforms. EPS15 (Epidermal

## Target Details

Growth Factor Receptor Pathway Substrate 15) is a Protein Coding gene. Diseases associated with EPS15 include Vaccinia. Among its related pathways are Notch signaling pathway (KEGG) and HIV Life Cycle. GO annotations related to this gene include calcium ion binding and SH3 domain binding. An important paralog of this gene is EPS15L1.

UniProt: [P42566](#)

Pathways: [EGFR Signaling Pathway](#), [Regulation of Muscle Cell Differentiation](#), [Skeletal Muscle Fiber Development](#), [EGFR Downregulation](#)

## Application Details

Application Notes: IHC 1:50-1:300, ELISA 1:5000-1:10000

Restrictions: For Research Use only

## Handling

Format: Liquid

Concentration: 1.5 mg/mL

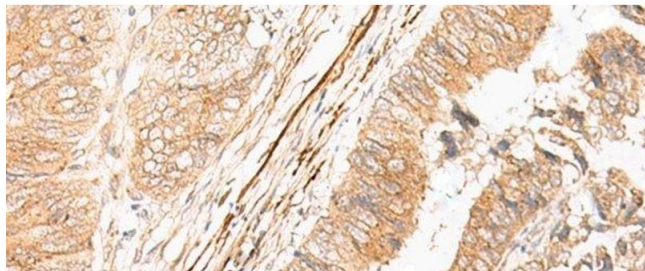
Buffer: PBS with 0.05 % Sodium azide and 40 % Glycerol, pH 7.4

Preservative: Sodium azide

Precaution of Use: This product contains Sodium azide: a POISONOUS AND HAZARDOUS SUBSTANCE which should be handled by trained staff only.

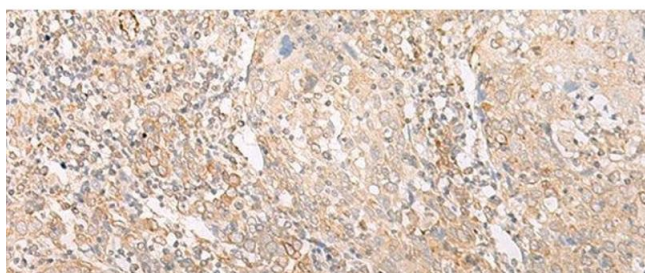
Storage: -20 °C

Storage Comment: Store at -20°C. Avoid freeze / thaw cycles.



#### Immunohistochemistry (Paraffin-embedded Sections)

**Image 1.** Immunohistochemistry of paraffin-embedded Human colorectal cancer tissue using EPS15 Polyclonal Antibody at dilution of 1:50(x200)



#### Immunohistochemistry (Paraffin-embedded Sections)

**Image 2.** Immunohistochemistry of paraffin-embedded Human cervical cancer tissue using EPS15 Polyclonal Antibody at dilution of 1:50(x200)