

Datasheet for ABIN7244876

**anti-ETAA1 antibody****2** Images[Go to Product page](#)

## Overview

Quantity:	200 µL
Target:	ETAA1
Reactivity:	Human
Host:	Rabbit
Clonality:	Polyclonal
Conjugate:	This ETAA1 antibody is un-conjugated
Application:	ELISA, Immunohistochemistry (IHC)

## Product Details

Immunogen:	Synthetic peptide of human ETAA1
Isotype:	IgG
Characteristics:	Polyclonal Antibody
Purification:	Antigen affinity purification

## Target Details

Target:	ETAA1
Alternative Name:	ETAA1 ( <a href="#">ETAA1 Products</a> )
Background:	<p>ETAA1 (Ewing's tumor-associated antigen 1), also known as ETAA16, is a 926 amino acid cytoplasmic protein that is highly expressed in kidney, brain, liver and Ewing tumor cell lines.</p> <p>ETAA1 undergoes post-translational phosphorylation following DNA damage, most likely by either ATM or ATR, and is suggested to function as a tumour-specific cell surface antigen in</p>

## Target Details

Ewing's family of tumour cell lines. The gene encoding ETAA1 maps to human chromosome 2, which consists of 237 million bases, encodes over 1,400 genes and makes up approximately 8 % of the human genome. A number of genetic diseases are linked to genes on chromosome 2 including Harlequin ichthyosis, sitosterolemia and Alstrom syndrome.

UniProt: [Q9NY74](#)

## Application Details

Application Notes: IHC 1:30-1:150, ELISA 1:5000-1:10000

Restrictions: For Research Use only

## Handling

Format: Liquid

Concentration: 0.66 mg/mL

Buffer: PBS with 0.05 % Sodium azide and 40 % Glycerol, pH 7.4

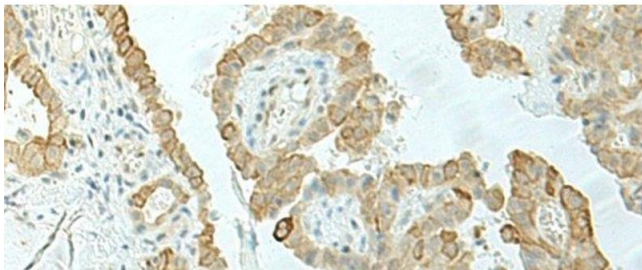
Preservative: Sodium azide

Precaution of Use: This product contains Sodium azide: a POISONOUS AND HAZARDOUS SUBSTANCE which should be handled by trained staff only.

Storage: -20 °C

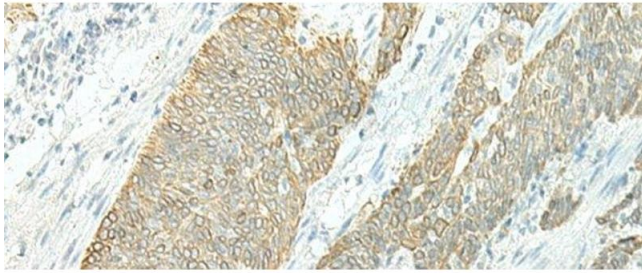
Storage Comment: Store at -20°C. Avoid freeze / thaw cycles.

## Images



### Immunohistochemistry (Paraffin-embedded Sections)

**Image 1.** Immunohistochemistry of paraffin-embedded Human thyroid cancer tissue using ETAA1 Polyclonal Antibody at dilution of 1:25(x200)



#### Immunohistochemistry (Paraffin-embedded Sections)

**Image 2.** Immunohistochemistry of paraffin-embedded Human esophagus cancer tissue using ETAA1 Polyclonal Antibody at dilution of 1:25(x200)