

Datasheet for ABIN7244897

**anti-PATJ antibody****1** Image[Go to Product page](#)

## Overview

Quantity:	200 µL
Target:	PATJ (INADL)
Reactivity:	Human
Host:	Rabbit
Clonality:	Polyclonal
Conjugate:	This PATJ antibody is un-conjugated
Application:	ELISA, Immunohistochemistry (IHC)

## Product Details

Immunogen:	Synthetic peptide of human PATJ
Isotype:	IgG
Characteristics:	Polyclonal Antibody
Purification:	Antigen affinity purification

## Target Details

Target:	PATJ (INADL)
Alternative Name:	PATJ ( <a href="#">INADL Products</a> )
Background:	This gene encodes a protein with multiple PDZ domains. PDZ domains mediate protein-protein interactions, and proteins with multiple PDZ domains often organize multimeric complexes at the plasma membrane. This protein localizes to tight junctions and to the apical membrane of epithelial cells. A similar protein in Drosophila is a scaffolding protein which tethers several

## Target Details

members of a multimeric signaling complex in photoreceptors.

UniProt: [Q8NI35](#)

## Application Details

Application Notes: IHC 1:40-1:200, ELISA 1:5000-1:10000

Restrictions: For Research Use only

## Handling

Format: Liquid

Concentration: 1.26 mg/mL

Buffer: PBS with 0.05 % Sodium azide and 40 % Glycerol, pH 7.4

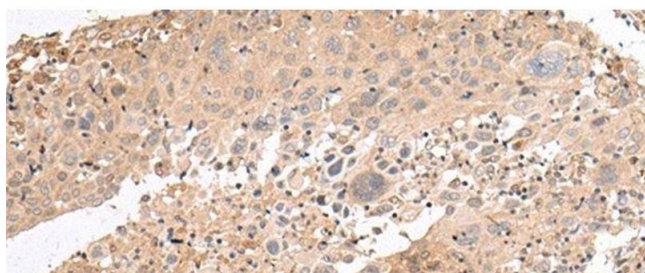
Preservative: Sodium azide

Precaution of Use: This product contains Sodium azide: a POISONOUS AND HAZARDOUS SUBSTANCE which should be handled by trained staff only.

Storage: -20 °C

Storage Comment: Store at -20°C. Avoid freeze / thaw cycles.

## Images



### Immunohistochemistry (Paraffin-embedded Sections)

**Image 1.** Immunohistochemistry of paraffin-embedded Human cervical cancer tissue using PATJ Polyclonal Antibody at dilution of 1:45(x200)