

Datasheet for ABIN7245014  
**anti-Galanin Receptor 1 antibody**[Go to Product page](#)

## 1 Image

## Overview

Quantity:	200 µL
Target:	Galanin Receptor 1 (GALR1)
Reactivity:	Human, Mouse, Rat
Host:	Rabbit
Clonality:	Polyclonal
Conjugate:	This Galanin Receptor 1 antibody is un-conjugated
Application:	ELISA, Western Blotting (WB)

## Product Details

Immunogen:	Synthetic peptide of human GALR1
Isotype:	IgG
Characteristics:	Polyclonal Antibody
Purification:	Antigen affinity purification

## Target Details

Target:	Galanin Receptor 1 (GALR1)
Alternative Name:	GALR1 ( <a href="#">GALR1 Products</a> )
Background:	The neuropeptide galanin elicits a range of biological effects by interaction with specific G-protein-coupled receptors. Galanin receptors are seven-transmembrane proteins shown to activate a variety of intracellular second-messenger pathways. GALR1 inhibits adenylyl cyclase via a G protein of the Gi/Go family. GALR1 is widely expressed in the brain and spinal cord, as

## Target Details

	well as in peripheral sites such as the small intestine and heart.
Molecular Weight:	Observed_MW: Refer to figures Calculated_MW: 39 kDa
UniProt:	<a href="#">P47211</a>
Pathways:	<a href="#">cAMP Metabolic Process</a>

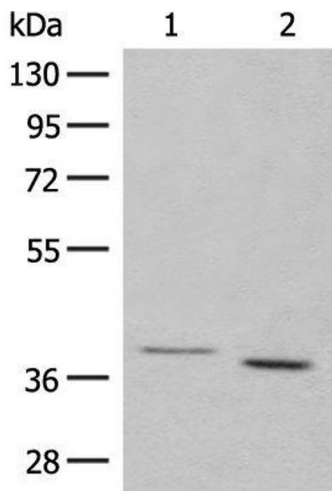
## Application Details

Application Notes:	WB 1:500-1:2000, ELISA 1:5000-1:10000
Restrictions:	For Research Use only

## Handling

Format:	Liquid
Concentration:	1.8 mg/mL
Buffer:	PBS with 0.05 % Sodium azide and 40 % Glycerol, pH 7.4
Preservative:	Sodium azide
Precaution of Use:	This product contains Sodium azide: a POISONOUS AND HAZARDOUS SUBSTANCE which should be handled by trained staff only.
Storage:	-20 °C
Storage Comment:	Store at -20°C. Avoid freeze / thaw cycles.

## Images



### Western Blotting

**Image 1.** Western blot analysis of 293T cell lysates using GALR1 Polyclonal Antibody at dilution of 1:500