

Datasheet for ABIN7245035

**anti-GUCA1B antibody**[Go to Product page](#)**2** Images

## Overview

Quantity:	200 µL
Target:	GUCA1B
Reactivity:	Human, Mouse
Host:	Rabbit
Clonality:	Polyclonal
Conjugate:	This GUCA1B antibody is un-conjugated
Application:	Western Blotting (WB), ELISA, Immunohistochemistry (IHC)

## Product Details

Immunogen:	Synthetic peptide of human GUCA1B
Isotype:	IgG
Characteristics:	Polyclonal Antibody
Purification:	Antigen affinity purification

## Target Details

Target:	GUCA1B
Alternative Name:	GUCA1B ( <a href="#">GUCA1B Products</a> )
Background:	The protein encoded by this gene is a calcium-binding protein that activates photoreceptor guanylate cyclases. This gene may have arisen due to a gene duplication event since there is a highly similar gene clustered with it on chromosome 6. Mutations in this gene can cause a form of retinitis pigmentosa.

## Target Details

Molecular Weight:	Observed_MW: Refer to figures Calculated_MW: 23 kDa
UniProt:	<a href="#">Q9UMX6</a>
Pathways:	<a href="#">Regulation of G-Protein Coupled Receptor Protein Signaling, Phototransduction</a>

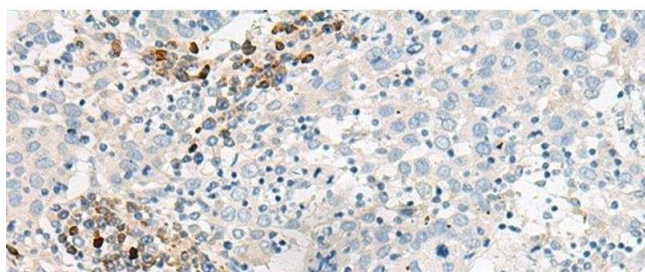
## Application Details

Application Notes:	WB 1:500-1:2000, IHC 1:30-1:150, ELISA 1:5000-1:10000
Restrictions:	For Research Use only

## Handling

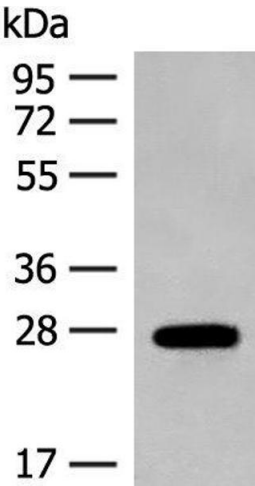
Format:	Liquid
Concentration:	1.38 mg/mL
Buffer:	PBS with 0.05 % Sodium azide and 40 % Glycerol, pH 7.4
Preservative:	Sodium azide
Precaution of Use:	This product contains Sodium azide: a POISONOUS AND HAZARDOUS SUBSTANCE which should be handled by trained staff only.
Storage:	-20 °C
Storage Comment:	Store at -20°C. Avoid freeze / thaw cycles.

## Images



### Immunohistochemistry (Paraffin-embedded Sections)

**Image 1.** Immunohistochemistry of paraffin-embedded Human cervical cancer tissue using GUCA1B Polyclonal Antibody at dilution of 1:45(x200)



Western Blotting

**Image 2.** Western blot analysis of Mouse eye tissue lysate using GUCA1B Polyclonal Antibody at dilution of 1:500