

Datasheet for ABIN7245044  
**anti-Tamalin/GRASP antibody**[Go to Product page](#)

## 2 Images

## Overview

|              |  |
|--------------|--|
| Quantity:    | 200 µL                                       |
| Target:      | Tamalin/GRASP (GRASP)                        |
| Reactivity:  | Mouse, Rat, Human                            |
| Host:        | Rabbit                                       |
| Clonality:   | Polyclonal                                   |
| Conjugate:   | This Tamalin/GRASP antibody is un-conjugated |
| Application: | ELISA, Immunohistochemistry (IHC)            |

## Product Details

|                  |                                  |
|------------------|----------------------------------|
| Immunogen:       | Synthetic peptide of human GRASP |
| Isotype:         | IgG                              |
| Characteristics: | Polyclonal Antibody              |
| Purification:    | Antigen affinity purification    |

## Target Details

|                   |  |
|-------------------|--|
| Target:           | Tamalin/GRASP (GRASP)  |
| Alternative Name: | GRASP ( <a href="#">GRASP Products</a> )   |
| Background:       | This gene encodes a protein that functions as a molecular scaffold, linking receptors, including group 1 metabotropic glutamate receptors, to neuronal proteins. The encoded protein contains conserved domains, including a leucine zipper sequence, PDZ domain and a C-terminal PDZ-binding motif. Alternately spliced transcript variants have been observed for this gene. |

## Target Details

UniProt: [Q7Z6J2](#)

## Application Details

Application Notes: IHC 1:50-1:300, ELISA 1:5000-1:10000

Restrictions: For Research Use only

## Handling

Format: Liquid

Concentration: 2.46 mg/mL

Buffer: PBS with 0.05 % Sodium azide and 40 % Glycerol, pH 7.4

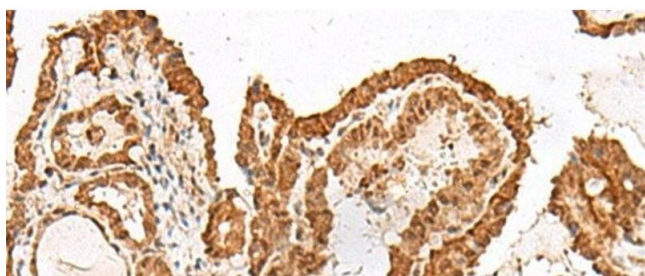
Preservative: Sodium azide

Precaution of Use: This product contains Sodium azide: a POISONOUS AND HAZARDOUS SUBSTANCE which should be handled by trained staff only.

Storage: -20 °C

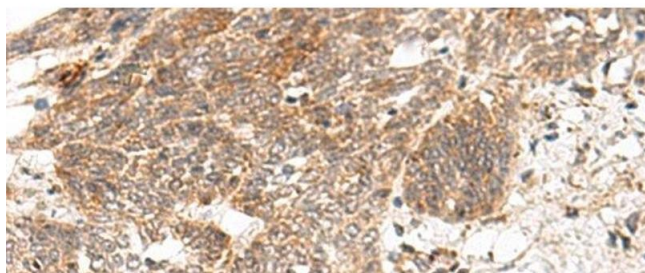
Storage Comment: Store at -20°C. Avoid freeze / thaw cycles.

## Images



### Immunohistochemistry (Paraffin-embedded Sections)

**Image 1.** Immunohistochemistry of paraffin-embedded Human thyroid cancer tissue using GRASP Polyclonal Antibody at dilution of 1:150(x200)



#### Immunohistochemistry (Paraffin-embedded Sections)

**Image 2.** Immunohistochemistry of paraffin-embedded Human esophagus cancer tissue using GRASP Polyclonal Antibody at dilution of 1:150(x200)