

Datasheet for ABIN7245053

anti-GFI1B antibody**1** Image[Go to Product page](#)

Overview

Quantity:	200 µL
Target:	GFI1B
Reactivity:	Human
Host:	Rabbit
Clonality:	Polyclonal
Conjugate:	This GFI1B antibody is un-conjugated
Application:	ELISA, Immunohistochemistry (IHC)

Product Details

Immunogen:	Synthetic peptide of human GFI1B
Isotype:	IgG
Characteristics:	Polyclonal Antibody
Purification:	Antigen affinity purification

Target Details

Target:	GFI1B
Alternative Name:	GFI1B (GFI1B Products)
Background:	This gene encodes a zinc-finger containing transcriptional regulator that is primarily expressed in cells of hematopoietic lineage. The encoded protein complexes with numerous other transcriptional regulatory proteins including GATA-1, runt-related transcription factor 1 and histone deacetylases to control expression of genes involved in the development and

Target Details

maturation of erythrocytes and megakaryocytes. Mutations in this gene are the cause of the autosomal dominant platelet disorder, platelet-type bleeding disorder-17. Alternate splicing results in multiple transcript variants. GFI1B (Growth Factor Independent 1B Transcriptional Repressor) is a Protein Coding gene. Diseases associated with GFI1B include Bleeding Disorder, Platelet-Type, 17 and Gray Platelet Syndrome. Among its related pathways are NF-kappaB Signaling. GO annotations related to this gene include RNA polymerase II transcription factor binding. An important paralog of this gene is GFI1.

UniProt: [Q5VTD9](#)

Pathways: [Cellular Response to Molecule of Bacterial Origin](#)

Application Details

Application Notes: IHC 1:50-1:300, ELISA 1:5000-1:10000

Restrictions: For Research Use only

Handling

Format: Liquid

Concentration: 1.14 mg/mL

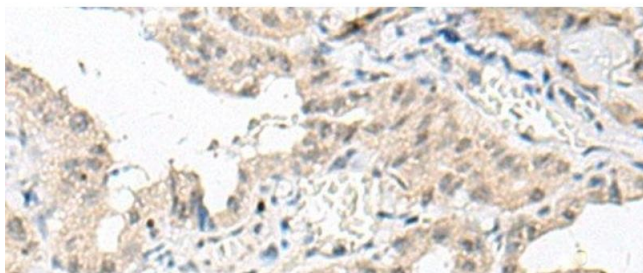
Buffer: PBS with 0.05 % Sodium azide and 40 % Glycerol, pH 7.4

Preservative: Sodium azide

Precaution of Use: This product contains Sodium azide: a POISONOUS AND HAZARDOUS SUBSTANCE which should be handled by trained staff only.

Storage: -20 °C

Storage Comment: Store at -20°C. Avoid freeze / thaw cycles.



Immunohistochemistry (Paraffin-embedded Sections)

Image 1. Immunohistochemistry of paraffin-embedded Human thyroid cancer tissue using GFI1B Polyclonal Antibody at dilution of 1:80(x200)