

Datasheet for ABIN7245062

anti-GLCCI1 antibody**1** Image[Go to Product page](#)

Overview

Quantity:	200 µL
Target:	GLCCI1
Reactivity:	Human, Mouse
Host:	Rabbit
Clonality:	Polyclonal
Conjugate:	This GLCCI1 antibody is un-conjugated
Application:	Western Blotting (WB), ELISA

Product Details

Immunogen:	Synthetic peptide of human GLCCI1
Isotype:	IgG
Characteristics:	Polyclonal Antibody
Purification:	Antigen affinity purification

Target Details

Target:	GLCCI1
Alternative Name:	GLCCI1 (GLCCI1 Products)
Background:	This gene encodes a protein of unknown function. Expression of this gene is induced by glucocorticoids and may be an early marker for glucocorticoid-induced apoptosis. Single nucleotide polymorphisms in this gene are associated with a decreased response to inhaled glucocorticoids in asthmatic patients.

Target Details

Molecular Weight:	Observed_MW: Refer to figures Calculated_MW: 58 kDa
UniProt:	Q86VQ1

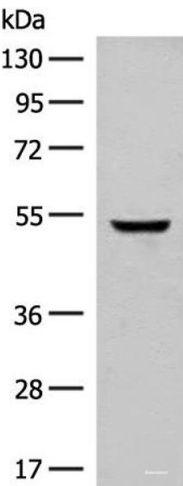
Application Details

Application Notes:	WB 1:500-1:2000, ELISA 1:5000-1:10000
Restrictions:	For Research Use only

Handling

Format:	Liquid
Concentration:	1.02 mg/mL
Buffer:	PBS with 0.05 % Sodium azide and 40 % Glycerol, pH 7.4
Preservative:	Sodium azide
Precaution of Use:	This product contains Sodium azide: a POISONOUS AND HAZARDOUS SUBSTANCE which should be handled by trained staff only.
Storage:	-20 °C
Storage Comment:	Store at -20°C. Avoid freeze / thaw cycles.

Images



Western Blotting

Image 1. Western blot analysis of Human cerebella tissue lysate using GLCCI1 Polyclonal Antibody at dilution of 1:400