

Datasheet for ABIN7245116

anti-RPS28 antibody

3 Images

[Go to Product page](#)

Overview

Quantity:	200 µL
Target:	RPS28
Reactivity:	Human, Mouse, Rat
Host:	Rabbit
Clonality:	Polyclonal
Conjugate:	This RPS28 antibody is un-conjugated
Application:	ELISA, Immunohistochemistry (IHC), Western Blotting (WB)

Product Details

Immunogen:	Synthetic peptide of human RPS28
Isotype:	IgG
Characteristics:	Polyclonal Antibody
Purification:	Antigen affinity purification

Target Details

Target:	RPS28
Alternative Name:	RPS28 (RPS28 Products)
Background:	Ribosomes, the organelles that catalyze protein synthesis, consist of a small 40S subunit and a large 60S subunit. Together these subunits are composed of 4 RNA species and approximately 80 structurally distinct proteins. This gene encodes a ribosomal protein that is a component of the 40S subunit. The protein belongs to the S28E family of ribosomal proteins. It is located in

Target Details

the cytoplasm. As is typical for genes encoding ribosomal proteins, there are multiple processed pseudogenes of this gene dispersed through the genome.

Molecular Weight: Observed_MW: Refer to figures
Calculated_MW: 8 kDa

UniProt: [P62857](#)

Application Details

Application Notes: WB 1:500-1:2000, IHC 1:40-1:200, ELISA 1:5000-1:10000

Restrictions: For Research Use only

Handling

Format: Liquid

Concentration: 0.9 mg/mL

Buffer: PBS with 0.05 % Sodium azide and 40 % Glycerol, pH 7.4

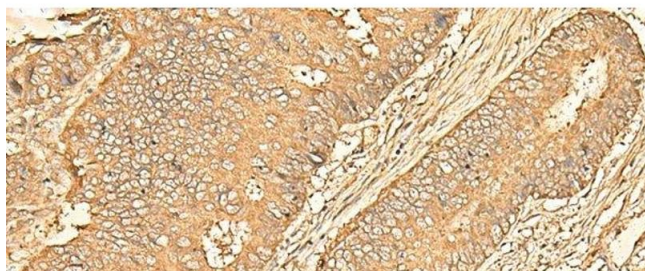
Preservative: Sodium azide

Precaution of Use: This product contains Sodium azide: a POISONOUS AND HAZARDOUS SUBSTANCE which should be handled by trained staff only.

Storage: -20 °C

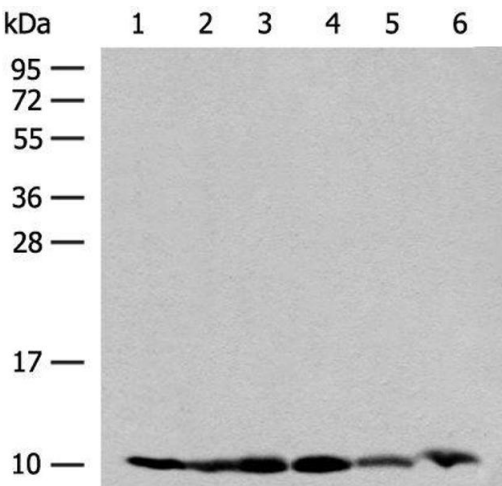
Storage Comment: Store at -20°C. Avoid freeze / thaw cycles.

Images



Immunohistochemistry (Paraffin-embedded Sections)

Image 1. Immunohistochemistry of paraffin-embedded Human colorectal cancer tissue using RPS28 Polyclonal Antibody at dilution of 1:30(x200)



Western Blotting

Image 2. Western blot analysis of 293T and PC3 cell Mouse spleen tissue 231 cell Human breast cancer tissue Mouse kidney tissue lysates using RPS28 Polyclonal Antibody at dilution of 1:200



Immunohistochemistry (Paraffin-embedded Sections)

Image 3. Immunohistochemistry of paraffin-embedded Human cervical cancer tissue using RPS28 Polyclonal Antibody at dilution of 1:30(x200)