

Datasheet for ABIN7245122
anti-ENAH antibody



[Go to Product page](#)

1 Image

Overview

Quantity:	200 µL
Target:	ENAH
Reactivity:	Human, Mouse
Host:	Rabbit
Clonality:	Polyclonal
Conjugate:	This ENAH antibody is un-conjugated
Application:	ELISA, Immunohistochemistry (IHC)

Product Details

Immunogen:	Synthetic peptide of human ENAH
Isotype:	IgG
Characteristics:	Polyclonal Antibody
Purification:	Antigen affinity purification

Target Details

Target:	ENAH
Alternative Name:	ENAH (ENAH Products)
Background:	This gene encodes a member of the enabled/ vasodilator-stimulated phosphoprotein. Members of this gene family are involved in actin-based motility. This protein is involved in regulating the assembly of actin filaments and modulates cell adhesion and motility. Alternate splice variants of this gene have been correlated with tumor invasiveness in certain tissues and these variants

Target Details

may serve as prognostic markers. A pseudogene of this gene is found on chromosome 3. ENAH (Enabled Homolog (Drosophila)) is a Protein Coding gene. Among its related pathways are TCR signaling (REACTOME) and Innate Immune System. GO annotations related to this gene include actin binding and WW domain binding. An important paralog of this gene is EVL.

UniProt: [Q8N8S7](#)

Application Details

Application Notes: IHC 1:40-1:200, ELISA 1:5000-1:10000

Restrictions: For Research Use only

Handling

Format: Liquid

Concentration: 1.8 mg/mL

Buffer: PBS with 0.05 % Sodium azide and 40 % Glycerol, pH 7.4

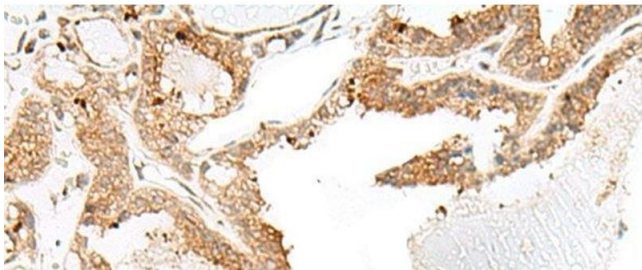
Preservative: Sodium azide

Precaution of Use: This product contains Sodium azide: a POISONOUS AND HAZARDOUS SUBSTANCE which should be handled by trained staff only.

Storage: -20 °C

Storage Comment: Store at -20°C. Avoid freeze / thaw cycles.

Images



Immunohistochemistry (Paraffin-embedded Sections)

Image 1. Immunohistochemistry of paraffin-embedded Human thyroid cancer tissue using ENAH Polyclonal Antibody at dilution of 1:60(x200)