

Datasheet for ABIN7245125

anti-Lactate Dehydrogenase A antibody

3 Images

[Go to Product page](#)

Overview

Quantity:	200 µL
Target:	Lactate Dehydrogenase A (LDHA)
Reactivity:	Human, Mouse, Rat
Host:	Rabbit
Clonality:	Polyclonal
Conjugate:	This Lactate Dehydrogenase A antibody is un-conjugated
Application:	Western Blotting (WB), ELISA, Immunohistochemistry (IHC)

Product Details

Immunogen:	Synthetic peptide of human LDHA
Isotype:	IgG
Characteristics:	Polyclonal Antibody
Purification:	Antigen affinity purification

Target Details

Target:	Lactate Dehydrogenase A (LDHA)
Alternative Name:	LDHA (LDHA Products)
Background:	LDHA,also named as LDH-M and NY-REN-59,is an enzyme which catalyzes the inter-conversion of pyruvate and L-lactate with concomitant inter-conversion of NADH and NAD+. LDHA is found in most somatic tissues,though predominantly in muscle tissue and tumours,and belongs to the lactate dehydrogenase family. It has long been known that many human cancers have

Target Details

higher LDHA levels compared to normal tissues. It has also been shown that LDHA plays an important role in the development, invasion and metastasis of malignancies. Mutations in LDHA have been linked to exertional myoglobinuria. LDHA has some isoforms with MW 26-40 kDa.

Molecular Weight: Observed_MW: Refer to figures
Calculated_MW: 37 kDa

UniProt: [P00338](#)

Pathways: [Warburg Effect](#)

Application Details

Application Notes: WB 1:500-1:2000, IHC 1:30-1:150, ELISA 1:5000-1:10000

Restrictions: For Research Use only

Handling

Format: Liquid

Concentration: 0.72 mg/mL

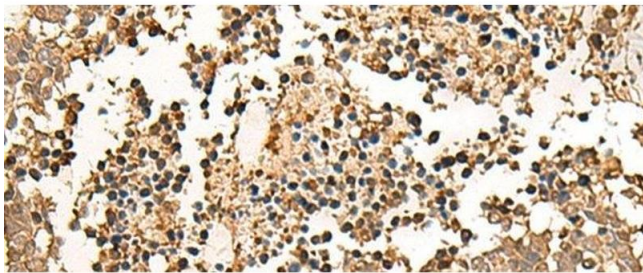
Buffer: PBS with 0.05 % Sodium azide and 40 % Glycerol, pH 7.4

Preservative: Sodium azide

Precaution of Use: This product contains Sodium azide: a POISONOUS AND HAZARDOUS SUBSTANCE which should be handled by trained staff only.

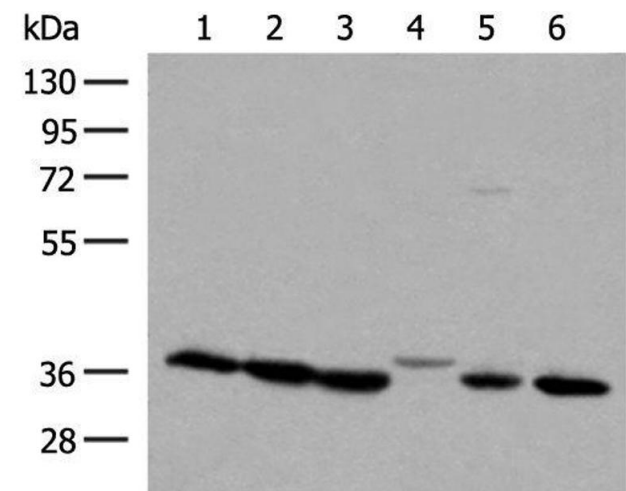
Storage: -20 °C

Storage Comment: Store at -20°C. Avoid freeze / thaw cycles.



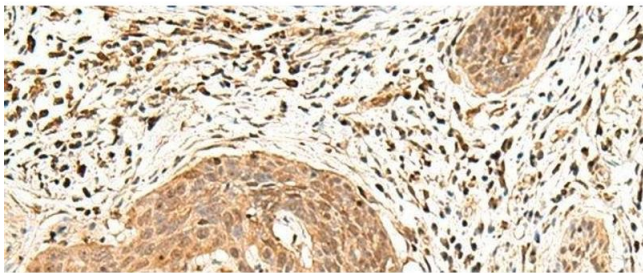
Immunohistochemistry (Paraffin-embedded Sections)

Image 1. Immunohistochemistry of paraffin-embedded Human lung cancer tissue using LDHA Polyclonal Antibody at dilution of 1:25(x200)



Western Blotting

Image 2. Western blot analysis of 293T and A375 cell lysates using LDHA Polyclonal Antibody at dilution of 1:250



Immunohistochemistry (Paraffin-embedded Sections)

Image 3. Immunohistochemistry of paraffin-embedded Human esophagus cancer tissue using LDHA Polyclonal Antibody at dilution of 1:25(x200)