

Datasheet for ABIN7245128

anti-HLAG antibody[Go to Product page](#)**1** Image

Overview

| | |
|--------------|-------------------------------------|
| Quantity: | 200 µL |
| Target: | HLAG |
| Reactivity: | Human |
| Host: | Rabbit |
| Clonality: | Polyclonal |
| Conjugate: | This HLAG antibody is un-conjugated |
| Application: | ELISA, Immunohistochemistry (IHC) |

Product Details

| | |
|------------------|----------------------------------|
| Immunogen: | Synthetic peptide of human HLA-G |
| Isotype: | IgG |
| Characteristics: | Polyclonal Antibody |
| Purification: | Antigen affinity purification |

Target Details

| | |
|-------------------|---|
| Target: | HLAG |
| Alternative Name: | HLA-G (HLAG Products) |
| Background: | <p>Human major histocompatibility complex (MHC) antigens,also referred to as human leukocyte antigens (HLA),are encoded by genes located on the short arm of chromosome 6 (6p21.3).</p> <p>HLA-G is a non-classical MHC class I molecule with multiple immunoregulatory properties.</p> <p>HLA-G exhibits a restricted pattern of expression that includes placental extravillous</p> |

Target Details

trophoblasts at the maternal-fetal interface, where it abolishes maternal immune cell activity against fetus and establishes immune tolerance. Aberrant expression of HLA-G has been found in a variety of human neoplastic diseases. It plays an important role in the escape of tumor cells from immunosurveillance.

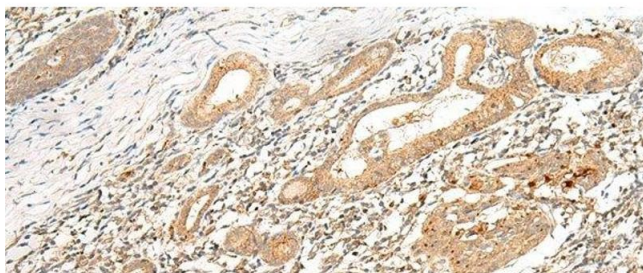
| | |
|-----------|--|
| UniProt: | P17693 |
| Pathways: | Regulation of Leukocyte Mediated Immunity , Positive Regulation of Immune Effector Process , Cancer Immune Checkpoints , Human Leukocyte Antigen (HLA) in Adaptive Immune Response |

Application Details

| | |
|--------------------|--------------------------------------|
| Application Notes: | IHC 1:50-1:300, ELISA 1:5000-1:10000 |
| Restrictions: | For Research Use only |

Handling

| | |
|--------------------|--|
| Format: | Liquid |
| Concentration: | 1.26 mg/mL |
| Buffer: | PBS with 0.05 % Sodium azide and 40 % Glycerol, pH 7.4 |
| Preservative: | Sodium azide |
| Precaution of Use: | This product contains Sodium azide: a POISONOUS AND HAZARDOUS SUBSTANCE which should be handled by trained staff only. |
| Storage: | -20 °C |
| Storage Comment: | Store at -20°C. Avoid freeze / thaw cycles. |



Immunohistochemistry (Paraffin-embedded Sections)

Image 1. Immunohistochemistry of paraffin-embedded Human esophagus cancer tissue using HLA-G Polyclonal Antibody at dilution of 1:45(x200)