

Datasheet for ABIN7245161  
**anti-Prokineticin Receptor 1 antibody**[Go to Product page](#)

## 1 Image

## Overview

Quantity:	200 µL
Target:	Prokineticin Receptor 1 (PROKR1)
Reactivity:	Human
Host:	Rabbit
Clonality:	Polyclonal
Conjugate:	This Prokineticin Receptor 1 antibody is un-conjugated
Application:	ELISA, Immunohistochemistry (IHC)

## Product Details

Immunogen:	Synthetic peptide of human PROKR1
Isotype:	IgG
Characteristics:	Polyclonal Antibody
Purification:	Antigen affinity purification

## Target Details

Target:	Prokineticin Receptor 1 (PROKR1)
Alternative Name:	PROKR1 ( <a href="#">PROKR1 Products</a> )
Background:	This gene encodes a member of the G-protein-coupled receptor family. The encoded protein binds to prokineticins (1 and 2), leading to the activation of MAPK and STAT signaling pathways. Prokineticins are protein ligands involved in angiogenesis and inflammation. The encoded protein is expressed in peripheral tissues such as those comprising the circulatory

## Target Details

system, lungs, reproductive system, endocrine system and the gastrointestinal system. The protein may be involved in signaling in human fetal ovary during initiation of primordial follicle formation. Sequence variants in this gene may be associated with recurrent miscarriage. PROKR1 (Prokineticin Receptor 1) is a Protein Coding gene. Diseases associated with PROKR1 include Ectopic Pregnancy. Among its related pathways are Peptide ligand-binding receptors and RET signaling. GO annotations related to this gene include G-protein coupled receptor activity and neuropeptide Y receptor activity. An important paralog of this gene is PROKR2.

UniProt: [Q8TCW9](#)

Pathways: [Hedgehog Signaling](#), [EGFR Signaling Pathway](#), [Neurotrophin Signaling Pathway](#), [Myometrial Relaxation and Contraction](#), [G-protein mediated Events](#), [Interaction of EGFR with phospholipase C-gamma](#)

## Application Details

Application Notes: IHC 1:40-1:200, ELISA 1:5000-1:10000

Restrictions: For Research Use only

## Handling

Format: Liquid

Concentration: 1.14 mg/mL

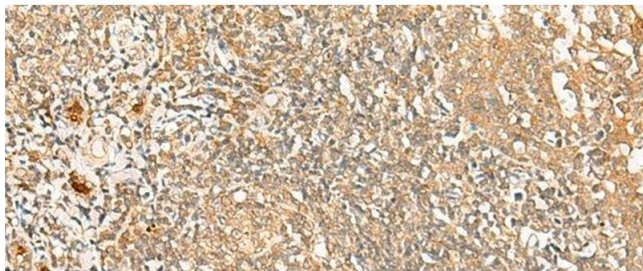
Buffer: PBS with 0.05 % Sodium azide and 40 % Glycerol, pH 7.4

Preservative: Sodium azide

Precaution of Use: This product contains Sodium azide: a POISONOUS AND HAZARDOUS SUBSTANCE which should be handled by trained staff only.

Storage: -20 °C

Storage Comment: Store at -20°C. Avoid freeze / thaw cycles.



#### Immunohistochemistry (Paraffin-embedded Sections)

**Image 1.** Immunohistochemistry of paraffin-embedded Human tonsil tissue using PROKR1 Polyclonal Antibody at dilution of 1:40(x200)