

Datasheet for ABIN7245191

**anti-GTF3C3 antibody****2** Images[Go to Product page](#)

## Overview

Quantity:	200 µL
Target:	GTF3C3
Reactivity:	Human
Host:	Rabbit
Clonality:	Polyclonal
Conjugate:	This GTF3C3 antibody is un-conjugated
Application:	ELISA, Immunohistochemistry (IHC)

## Product Details

Immunogen:	Synthetic peptide of human GTF3C3
Isotype:	IgG
Characteristics:	Polyclonal Antibody
Purification:	Antigen affinity purification

## Target Details

Target:	GTF3C3
Alternative Name:	GTF3C3 ( <a href="#">GTF3C3 Products</a> )
Background:	The protein encoded by this gene is part of the TFIIIC2 complex, which binds to the promoters of small nuclear and cytoplasmic RNA genes in order to recruit RNA polymerase III. The TFIIIC2 complex is composed of six subunits. Two transcript variants encoding different isoforms have been found for this gene. GTF3C3 (General Transcription Factor IIIC Subunit 3) is a Protein

## Target Details

Coding gene. Diseases associated with GTF3C3 include Tooth Agenesis. Among its related pathways are Gene Expression and RNA Polymerase III Transcription Initiation.

UniProt: [Q9Y5Q9](#)

## Application Details

Application Notes: IHC 1:40-1:200, ELISA 1:5000-1:10000

Restrictions: For Research Use only

## Handling

Format: Liquid

Concentration: 0.84 mg/mL

Buffer: PBS with 0.05 % Sodium azide and 40 % Glycerol, pH 7.4

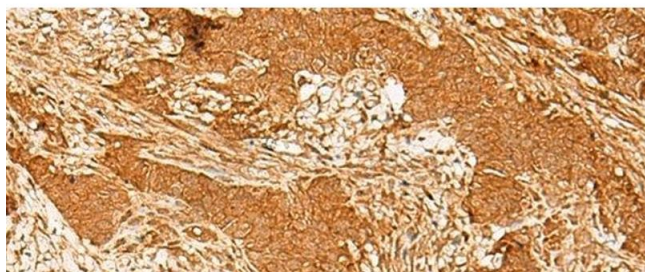
Preservative: Sodium azide

Precaution of Use: This product contains Sodium azide: a POISONOUS AND HAZARDOUS SUBSTANCE which should be handled by trained staff only.

Storage: -20 °C

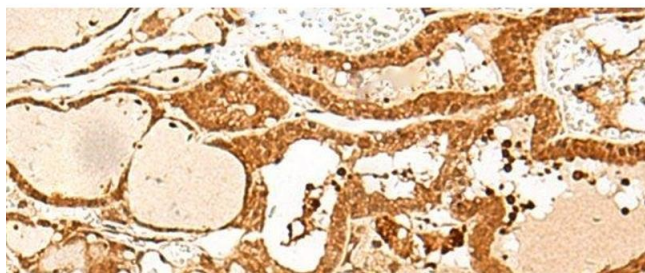
Storage Comment: Store at -20°C. Avoid freeze / thaw cycles.

## Images



### Immunohistochemistry (Paraffin-embedded Sections)

**Image 1.** Immunohistochemistry of paraffin-embedded Human ovarian cancer tissue using GTF3C3 Polyclonal Antibody at dilution of 1:30(x200)



#### Immunohistochemistry (Paraffin-embedded Sections)

**Image 2.** Immunohistochemistry of paraffin-embedded Human thyroid cancer tissue using GTF3C3 Polyclonal Antibody at dilution of 1:30(x200)