

Datasheet for ABIN7245206

anti-HEBP1 antibody**3** Images[Go to Product page](#)

Overview

Quantity:	200 µL
Target:	HEBP1
Reactivity:	Human
Host:	Rabbit
Clonality:	Polyclonal
Conjugate:	This HEBP1 antibody is un-conjugated
Application:	Western Blotting (WB), ELISA, Immunohistochemistry (IHC)

Product Details

Immunogen:	Synthetic peptide of human HEBP1
Isotype:	IgG
Characteristics:	Polyclonal Antibody
Purification:	Antigen affinity purification

Target Details

Target:	HEBP1
Alternative Name:	HEBP1 (HEBP1 Products)
Background:	The full-length protein encoded by this gene is an intracellular tetrapyrrole-binding protein. This protein includes a natural chemoattractant peptide of 21 amino acids at the N-terminus, which is a natural ligand for formyl peptide receptor-like receptor 2 (FPRL2) and promotes calcium mobilization and chemotaxis in monocytes and dendritic cells.

Target Details

Molecular Weight: Observed_MW: Refer to figures
Calculated_MW: 21 kDa

UniProt: [Q9NRV9](#)

Application Details

Application Notes: WB 1:500-1:2000, IHC 1:50-1:300, ELISA 1:5000-1:10000

Restrictions: For Research Use only

Handling

Format: Liquid

Concentration: 1.74 mg/mL

Buffer: PBS with 0.05 % Sodium azide and 40 % Glycerol, pH 7.4

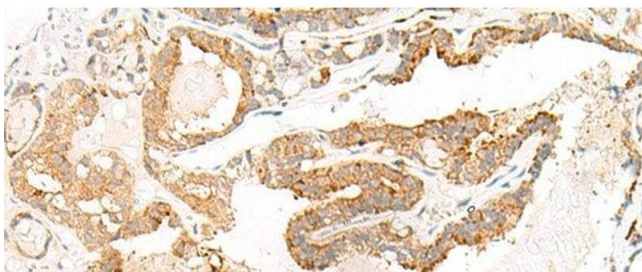
Preservative: Sodium azide

Precaution of Use: This product contains Sodium azide: a POISONOUS AND HAZARDOUS SUBSTANCE which should be handled by trained staff only.

Storage: -20 °C

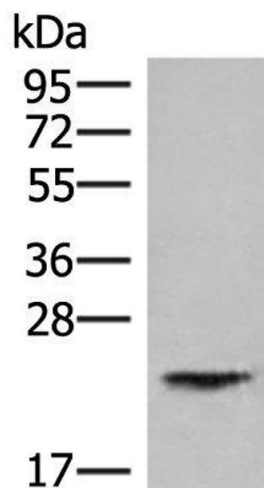
Storage Comment: Store at -20°C. Avoid freeze / thaw cycles.

Images



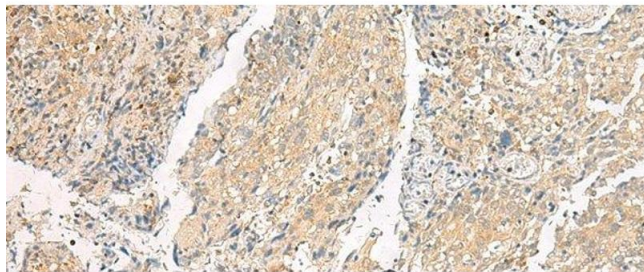
Immunohistochemistry (Paraffin-embedded Sections)

Image 1. Immunohistochemistry of paraffin-embedded Human thyroid cancer tissue using HEBP1 Polyclonal Antibody at dilution of 1:60(x200)



Western Blotting

Image 2. Western blot analysis of Human kidney tissue lysate using HEBP1 Polyclonal Antibody at dilution of 1:750



Immunohistochemistry (Paraffin-embedded Sections)

Image 3. Immunohistochemistry of paraffin-embedded Human cervical cancer tissue using HEBP1 Polyclonal Antibody at dilution of 1:60(x200)