

Datasheet for ABIN7245251
anti-ONECUT1 antibody[Go to Product page](#)

1 Image

Overview

Quantity:	200 µL
Target:	ONECUT1
Reactivity:	Human, Mouse, Rat
Host:	Rabbit
Clonality:	Polyclonal
Conjugate:	This ONECUT1 antibody is un-conjugated
Application:	Western Blotting (WB), ELISA

Product Details

Immunogen:	Synthetic peptide of human ONECUT1
Isotype:	IgG
Characteristics:	Polyclonal Antibody
Purification:	Antigen affinity purification

Target Details

Target:	ONECUT1
Alternative Name:	ONECUT1 (ONECUT1 Products)
Background:	This gene encodes a member of the Cut homeobox family of transcription factors. Expression of the encoded protein is enriched in the liver, where it stimulates transcription of liver-expressed genes, and antagonizes glucocorticoid-stimulated gene transcription. This gene may influence a variety of cellular processes including glucose metabolism, cell cycle regulation, and

Target Details

	it may also be associated with cancer. Alternative splicing results in multiple transcript variants.
Molecular Weight:	Observed_MW: Refer to figures Calculated_MW: 51 kDa
UniProt:	Q9UBC0

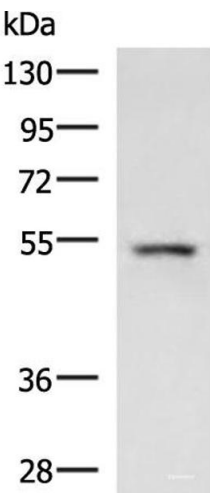
Application Details

Application Notes:	WB 1:500-1:2000, ELISA 1:5000-1:10000
Restrictions:	For Research Use only

Handling

Format:	Liquid
Concentration:	1.44 mg/mL
Buffer:	PBS with 0.05 % Sodium azide and 40 % Glycerol, pH 7.4
Preservative:	Sodium azide
Precaution of Use:	This product contains Sodium azide: a POISONOUS AND HAZARDOUS SUBSTANCE which should be handled by trained staff only.
Storage:	-20 °C
Storage Comment:	Store at -20°C. Avoid freeze / thaw cycles.

Images



Western Blotting

Image 1. Western blot analysis of Rat liver tissue lysate using ONECUT1 Polyclonal Antibody at dilution of 1:600