



[Go to Product page](#)

Datasheet for ABIN7245293
anti-IL1RAPL2 antibody

2 Images

Overview

| | |
|--------------|---|
| Quantity: | 200 µL |
| Target: | IL1RAPL2 |
| Reactivity: | Human, Mouse |
| Host: | Rabbit |
| Clonality: | Polyclonal |
| Conjugate: | This IL1RAPL2 antibody is un-conjugated |
| Application: | ELISA, Immunohistochemistry (IHC) |

Product Details

| | |
|------------------|-------------------------------------|
| Immunogen: | Synthetic peptide of human IL1RAPL2 |
| Isotype: | IgG |
| Characteristics: | Polyclonal Antibody |
| Purification: | Antigen affinity purification |

Target Details

| | |
|-------------------|--|
| Target: | IL1RAPL2 |
| Alternative Name: | IL1RAPL2 (IL1RAPL2 Products) |
| Background: | The protein encoded by this gene is a member of the interleukin 1 receptor family. This protein is similar to the interleukin 1 accessory proteins, and is most closely related to interleukin 1 receptor accessory protein-like 1 (IL1RAPL1). This gene and IL1RAPL1 are located at a region on chromosome X that is associated with X-linked non-syndromic cognitive disability. |

Target Details

UniProt: [Q9NP60](#)

Application Details

Application Notes: IHC 1:40-1:200, ELISA 1:5000-1:10000

Restrictions: For Research Use only

Handling

Format: Liquid

Concentration: 0.78 mg/mL

Buffer: PBS with 0.05 % Sodium azide and 40 % Glycerol, pH 7.4

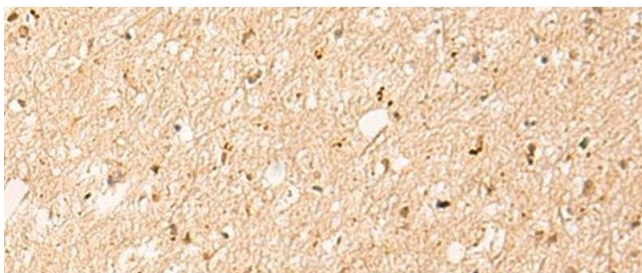
Preservative: Sodium azide

Precaution of Use: This product contains Sodium azide: a POISONOUS AND HAZARDOUS SUBSTANCE which should be handled by trained staff only.

Storage: -20 °C

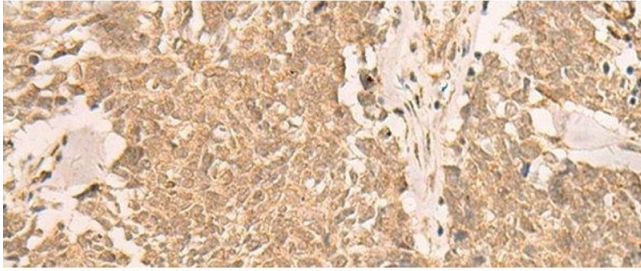
Storage Comment: Store at -20°C. Avoid freeze / thaw cycles.

Images



Immunohistochemistry (Paraffin-embedded Sections)

Image 1. Immunohistochemistry of paraffin-embedded Human brain tissue using IL1RAPL2 Polyclonal Antibody at dilution of 1:25(x200)



Immunohistochemistry (Paraffin-embedded Sections)

Image 2. Immunohistochemistry of paraffin-embedded Human lung cancer tissue using IL1RAPL2 Polyclonal Antibody at dilution of 1:25(x200)