

Datasheet for ABIN7245296
anti-IL36A/IL1F6 antibody[Go to Product page](#)

2 Images

Overview

Quantity:	200 µL
Target:	IL36A/IL1F6 (IL1F6)
Reactivity:	Human, Mouse
Host:	Rabbit
Clonality:	Polyclonal
Conjugate:	This IL36A/IL1F6 antibody is un-conjugated
Application:	Western Blotting (WB), ELISA, Immunohistochemistry (IHC)

Product Details

Immunogen:	Synthetic peptide of human IL36A
Isotype:	IgG
Characteristics:	Polyclonal Antibody
Purification:	Antigen affinity purification

Target Details

Target:	IL36A/IL1F6 (IL1F6)
Alternative Name:	IL36A (IL1F6 Products)
Background:	IL36A (Interleukin 36, Alpha) is a Protein Coding gene. Diseases associated with IL36A include Psoriasis. Among its related pathways are Innate Immune System and Toll-Like receptor Signaling Pathways. GO annotations related to this gene include cytokine activity and interleukin-1 receptor binding. An important paralog of this gene is IL36G. The protein encoded

Target Details

by this gene is a cytokine that can activate NF-kappa-B and MAPK signaling pathways to generate an inflammatory response. The encoded protein functions primarily in skin and demonstrates increased expression in psoriasis. In addition, decreased expression of this gene has been linked to a poor prognosis in both hepatocellular carcinoma and colorectal cancer patients.

Molecular Weight: Observed_MW: Refer to figures
Calculated_MW: 18 kDa

UniProt: [Q9UHA7](#)

Pathways: [Cancer Immune Checkpoints](#)

Application Details

Application Notes: WB 1:500-1:2000, IHC 1:30-1:150, ELISA 1:5000-1:10000

Restrictions: For Research Use only

Handling

Format: Liquid

Concentration: 0.78 mg/mL

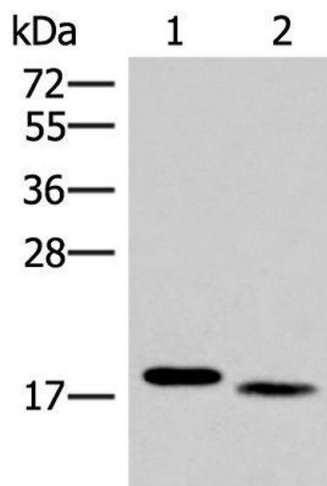
Buffer: PBS with 0.05 % Sodium azide and 40 % Glycerol, pH 7.4

Preservative: Sodium azide

Precaution of Use: This product contains Sodium azide: a POISONOUS AND HAZARDOUS SUBSTANCE which should be handled by trained staff only.

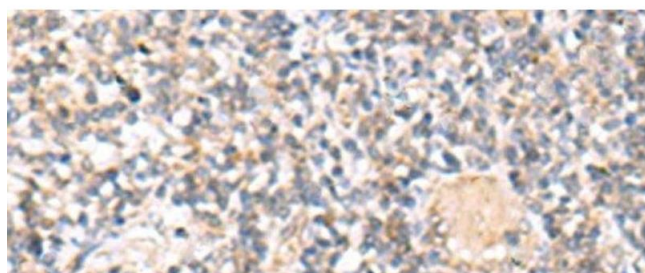
Storage: -20 °C

Storage Comment: Store at -20°C. Avoid freeze / thaw cycles.



Western Blotting

Image 1. Western blot analysis of Mouse liver tissue and Human tonsil tissue lysates using IL36A Polyclonal Antibody at dilution of 1:300



Immunohistochemistry (Paraffin-embedded Sections)

Image 2. Immunohistochemistry of paraffin-embedded Human tonsil tissue using IL36A Polyclonal Antibody at dilution of 1:30(x200)