

Datasheet for ABIN7245305

**anti-INO80 antibody**[Go to Product page](#)**1** Image

## Overview

Quantity:	200 µL
Target:	INO80
Reactivity:	Human, Mouse
Host:	Rabbit
Clonality:	Polyclonal
Conjugate:	This INO80 antibody is un-conjugated
Application:	ELISA, Immunohistochemistry (IHC)

## Product Details

Immunogen:	Synthetic peptide of human INO80
Isotype:	IgG
Characteristics:	Polyclonal Antibody
Purification:	Antigen affinity purification

## Target Details

Target:	INO80
Alternative Name:	INO80 ( <a href="#">INO80 Products</a> )
Background:	This gene encodes a subunit of the chromatin remodeling complex, which is classified into subfamilies depending on sequence features apart from the conserved ATPase domain. This protein is the catalytic ATPase subunit of the INO80 chromatin remodeling complex, which is characterized by a DNA-binding domain. This protein is proposed to bind DNA and be recruited

## Target Details

by the YY1 transcription factor to activate certain genes. Alternative splicing results in multiple transcript variants.

UniProt: [Q9ULG1](#)

Pathways: [Positive Regulation of Response to DNA Damage Stimulus](#)

## Application Details

Application Notes: IHC 1:50-1:300, ELISA 1:5000-1:10000

Restrictions: For Research Use only

## Handling

Format: Liquid

Concentration: 2.46 mg/mL

Buffer: PBS with 0.05 % Sodium azide and 40 % Glycerol, pH 7.4

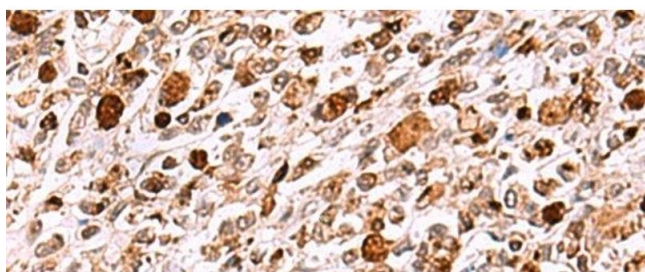
Preservative: Sodium azide

Precaution of Use: This product contains Sodium azide: a POISONOUS AND HAZARDOUS SUBSTANCE which should be handled by trained staff only.

Storage: -20 °C

Storage Comment: Store at -20°C. Avoid freeze / thaw cycles.

## Images



### Immunohistochemistry (Paraffin-embedded Sections)

**Image 1.** Immunohistochemistry of paraffin-embedded Human gastric cancer tissue using INO80 Polyclonal Antibody at dilution of 1:85(x200)