



[Go to Product page](#)

Datasheet for ABIN7245371

## anti-ITIH4 antibody

### 1 Image

#### Overview

Quantity:	200 µL
Target:	ITIH4
Reactivity:	Human
Host:	Rabbit
Clonality:	Polyclonal
Conjugate:	This ITIH4 antibody is un-conjugated
Application:	ELISA, Immunohistochemistry (IHC)

#### Product Details

Immunogen:	Synthetic peptide of human ITIH4
Isotype:	IgG
Characteristics:	Polyclonal Antibody
Purification:	Antigen affinity purification

#### Target Details

Target:	ITIH4
Alternative Name:	ITIH4 ( <a href="#">ITIH4 Products</a> )
Background:	The protein encoded by this gene is secreted into the blood, where it is cleaved by plasma kallikrein into two smaller forms. Expression of this gene has been detected only in liver, and it seems to be upregulated during surgical trauma. This gene is part of a cluster of similar genes on chromosome 3. Two transcript variants encoding different isoforms have been found for

## Target Details

this gene.

UniProt: [Q14624](#)

Pathways: [Glycosaminoglycan Metabolic Process](#)

## Application Details

Application Notes: IHC 1:30-1:150, ELISA 1:5000-1:10000

Restrictions: For Research Use only

## Handling

Format: Liquid

Concentration: 1.44 mg/mL

Buffer: PBS with 0.05 % Sodium azide and 40 % Glycerol, pH 7.4

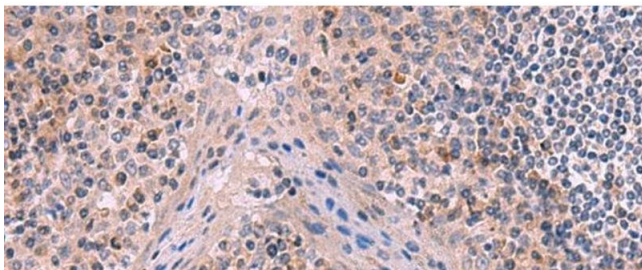
Preservative: Sodium azide

Precaution of Use: This product contains Sodium azide: a POISONOUS AND HAZARDOUS SUBSTANCE which should be handled by trained staff only.

Storage: -20 °C

Storage Comment: Store at -20°C. Avoid freeze / thaw cycles.

## Images



### Immunohistochemistry (Paraffin-embedded Sections)

**Image 1.** Immunohistochemistry of paraffin-embedded Human tonsil tissue using ITIH4 Polyclonal Antibody at dilution of 1:50(x200)