

Datasheet for ABIN7245374

anti-ITPR2 antibody**2** Images[Go to Product page](#)

Overview

Quantity:	200 µL
Target:	ITPR2
Reactivity:	Human, Rat, Mouse
Host:	Rabbit
Clonality:	Polyclonal
Conjugate:	This ITPR2 antibody is un-conjugated
Application:	ELISA, Immunohistochemistry (IHC)

Product Details

Immunogen:	Synthetic peptide of human ITPR2
Isotype:	IgG
Characteristics:	Polyclonal Antibody
Purification:	Antigen affinity purification

Target Details

Target:	ITPR2
Alternative Name:	ITPR2 (ITPR2 Products)
Background:	Inositol 1,4,5-triphosphate (IP3) functions as a second messenger for a myriad of extracellular stimuli including hormones, growth factors and neurotransmitters. Receptor tyrosine kinases indirectly increase the intracellular levels of IP3 through the activation of phospholipases such as phospholipase C (PLC), which convert phosphatidylinositol-4,5 biphosphate into IP3 and

Target Details

diacylglycerol (DAG). The inositol 1,4,5-triphosphate receptor, IP3R, acts as an inositol triphosphate (IP3)-gated calcium release channel in a variety of cell types. Three IP3 receptor subtypes have been described and are designated IP3R-I, IP3R-II and IP3R-III. IP3R-I is the predominant IP3R subtype expressed in neuronal tissues and the central nervous system, but is also expressed at high levels in the liver.

UniProt: [Q14571](#)

Pathways: [Fc-epsilon Receptor Signaling Pathway](#), [EGFR Signaling Pathway](#), [Neurotrophin Signaling Pathway](#), [Thyroid Hormone Synthesis](#), [Myometrial Relaxation and Contraction](#), [G-protein mediated Events](#), [Interaction of EGFR with phospholipase C-gamma](#)

Application Details

Application Notes: IHC 1:50-1:300, ELISA 1:5000-1:10000

Restrictions: For Research Use only

Handling

Format: Liquid

Concentration: 1.86 mg/mL

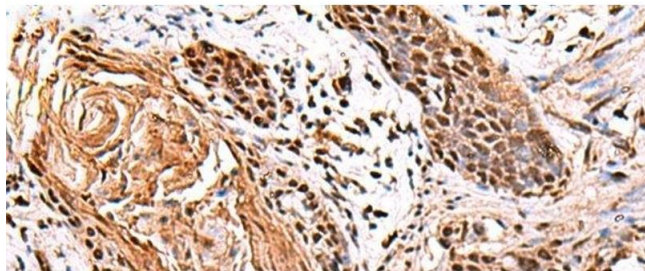
Buffer: PBS with 0.05 % Sodium azide and 40 % Glycerol, pH 7.4

Preservative: Sodium azide

Precaution of Use: This product contains Sodium azide: a POISONOUS AND HAZARDOUS SUBSTANCE which should be handled by trained staff only.

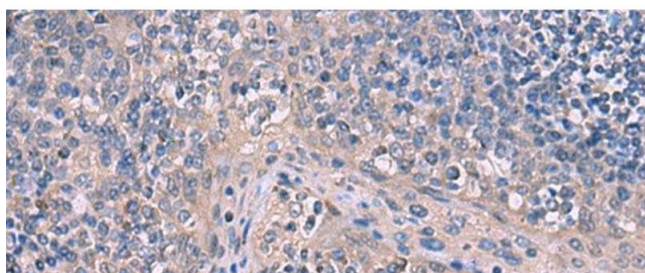
Storage: -20 °C

Storage Comment: Store at -20°C. Avoid freeze / thaw cycles.



Immunohistochemistry (Paraffin-embedded Sections)

Image 1. Immunohistochemistry of paraffin-embedded Human esophagus cancer tissue using ITPR2 Polyclonal Antibody at dilution of 1:65(x200)



Immunohistochemistry (Paraffin-embedded Sections)

Image 2. Immunohistochemistry of paraffin-embedded Human tonsil tissue using ITPR2 Polyclonal Antibody at dilution of 1:65(x200)