

Datasheet for ABIN7245380

anti-JIP3 antibody**2** Images[Go to Product page](#)

Overview

Quantity:	200 µL
Target:	JIP3 (MAPK8IP3)
Reactivity:	Human
Host:	Rabbit
Clonality:	Polyclonal
Conjugate:	This JIP3 antibody is un-conjugated
Application:	ELISA, Immunohistochemistry (IHC)

Product Details

Immunogen:	Synthetic peptide of human MAPK8IP3
Isotype:	IgG
Characteristics:	Polyclonal Antibody
Purification:	Antigen affinity purification

Target Details

Target:	JIP3 (MAPK8IP3)
Alternative Name:	MAPK8IP3 (MAPK8IP3 Products)
Background:	The protein encoded by this gene shares similarity with the product of Drosophila syd gene, required for the functional interaction of kinesin I with axonal cargo. Studies of the similar gene in mouse suggested that this protein may interact with, and regulate the activity of numerous protein kinases of the JNK signaling pathway, and thus function as a scaffold protein in

Target Details

neuronal cells. The *C. elegans* counterpart of this gene is found to regulate synaptic vesicle transport possibly by integrating JNK signaling and kinesin-1 transport. Several alternatively spliced transcript variants of this gene have been described, but the full-length nature of some of these variants has not been determined. MAPK8IP3 (Mitogen-Activated Protein Kinase 8 Interacting Protein 3) is a Protein Coding gene. Among its related pathways are MAPK signaling pathway and Arf6 trafficking events. GO annotations related to this gene include kinesin binding and receptor signaling complex scaffold activity. An important paralog of this gene is SPAG9.

UniProt: [Q9UPT6](#)

Application Details

Application Notes: IHC 1:40-1:200, ELISA 1:5000-1:10000

Restrictions: For Research Use only

Handling

Format: Liquid

Concentration: 1.26 mg/mL

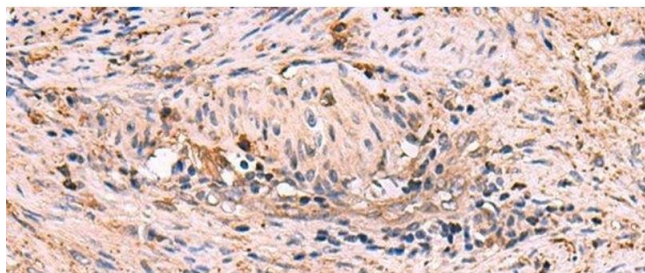
Buffer: PBS with 0.05 % Sodium azide and 40 % Glycerol, pH 7.4

Preservative: Sodium azide

Precaution of Use: This product contains Sodium azide: a POISONOUS AND HAZARDOUS SUBSTANCE which should be handled by trained staff only.

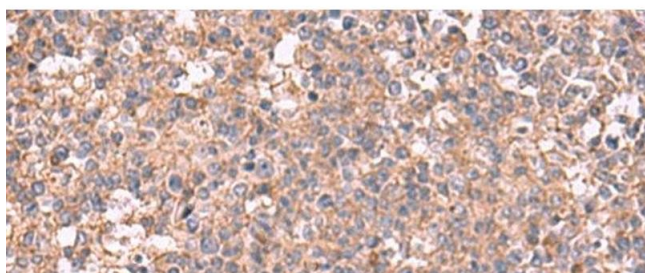
Storage: -20 °C

Storage Comment: Store at -20°C. Avoid freeze / thaw cycles.



Immunohistochemistry (Paraffin-embedded Sections)

Image 1. Immunohistochemistry of paraffin-embedded Human cervical cancer tissue using MAPK8IP3 Polyclonal Antibody at dilution of 1:45(x200)



Immunohistochemistry (Paraffin-embedded Sections)

Image 2. Immunohistochemistry of paraffin-embedded Human tonsil tissue using MAPK8IP3 Polyclonal Antibody at dilution of 1:45(x200)