



Datasheet for ABIN7245389

anti-PPY antibody



[Go to Product page](#)

1 Image

Overview

Quantity:	200 µL
Target:	PPY
Reactivity:	Human, Rat
Host:	Rabbit
Clonality:	Polyclonal
Conjugate:	This PPY antibody is un-conjugated
Application:	Western Blotting (WB), ELISA

Product Details

Immunogen:	Synthetic peptide of human PPY
Isotype:	IgG
Characteristics:	Polyclonal Antibody
Purification:	Antigen affinity purification

Target Details

Target:	PPY
Alternative Name:	PPY (PPY Products)
Background:	This gene encodes a member of the neuropeptide Y (NPY) family of peptides. The encoded 95 aa preproprotein is synthesized in the pancreatic islets of Langerhans and proteolytically processed to generate two peptide products. These products include the active pancreatic hormone of 36 aa and an icosapeptide of unknown function. This hormone acts as a regulator

Target Details

of pancreatic and gastrointestinal functions and may be important in the regulation of food intake. Plasma level of this hormone has been shown to be reduced in conditions associated with increased food intake and elevated in anorexia nervosa. In addition, infusion of this hormone in obese rodents has shown to decrease weight gain. Alternative splicing results in multiple transcript variants, at least one of which encodes an isoform that is proteolytically processed.

Molecular Weight: Observed_MW: Refer to figures
Calculated_MW: 11 kDa

UniProt: [P01298](#)

Pathways: [Feeding Behaviour](#)

Application Details

Application Notes: WB 1:1000-1:5000, ELISA 1:5000-1:10000

Restrictions: For Research Use only

Handling

Format: Liquid

Concentration: 3 mg/mL

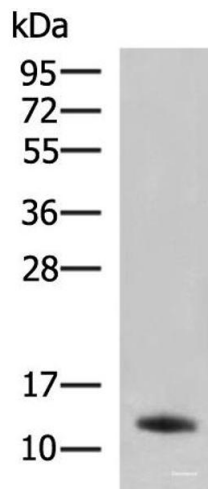
Buffer: PBS with 0.05 % Sodium azide and 40 % Glycerol, pH 7.4

Preservative: Sodium azide

Precaution of Use: This product contains Sodium azide: a POISONOUS AND HAZARDOUS SUBSTANCE which should be handled by trained staff only.

Storage: -20 °C

Storage Comment: Store at -20°C. Avoid freeze / thaw cycles.



Western Blotting

Image 1. Western blot analysis of Rat pancreas tissue lysate using PPY Polyclonal Antibody at dilution of 1:2500