



[Go to Product page](#)

Datasheet for ABIN7245410
anti-KAP1 antibody (pSer824)

3 Images

Overview

Quantity:	200 µL
Target:	KAP1 (TRIM28)
Binding Specificity:	pSer824
Reactivity:	Human, Mouse, Rat
Host:	Rabbit
Clonality:	Polyclonal
Conjugate:	This KAP1 antibody is un-conjugated
Application:	Western Blotting (WB), ELISA, Immunohistochemistry (IHC)

Product Details

Immunogen:	Synthetic peptide of human TRIM28(phospho-Ser824)
Isotype:	IgG
Characteristics:	Polyclonal Antibody
Purification:	Antigen affinity purification

Target Details

Target:	KAP1 (TRIM28)
Alternative Name:	TRIM28 (TRIM28 Products)
Background:	The protein encoded by this gene mediates transcriptional control by interaction with the Kruppel-associated box repression domain found in many transcription factors. The protein

Target Details

localizes to the nucleus and is thought to associate with specific chromatin regions. The protein is a member of the tripartite motif family. This tripartite motif includes three zinc-binding domains, a RING, a B-box type 1 and a B-box type 2, and a coiled-coil region.

Molecular Weight: Observed_MW: Refer to figures
Calculated_MW: 89 kDa

UniProt: [Q13263](#)

Pathways: [Hedgehog Signaling](#), [Positive Regulation of Response to DNA Damage Stimulus](#)

Application Details

Application Notes: WB 1:1000-1:5000, IHC 1:50-1:300, ELISA 1:5000-1:10000

Restrictions: For Research Use only

Handling

Format: Liquid

Concentration: 1.38 mg/mL

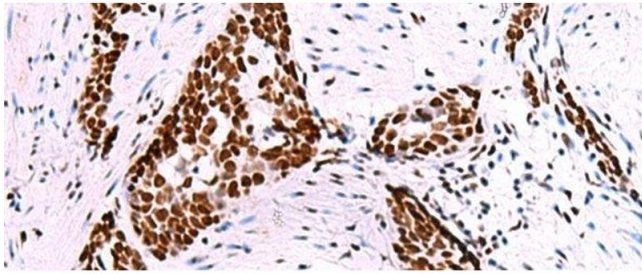
Buffer: PBS with 0.05 % Sodium azide and 40 % Glycerol, pH 7.4

Preservative: Sodium azide

Precaution of Use: This product contains Sodium azide: a POISONOUS AND HAZARDOUS SUBSTANCE which should be handled by trained staff only.

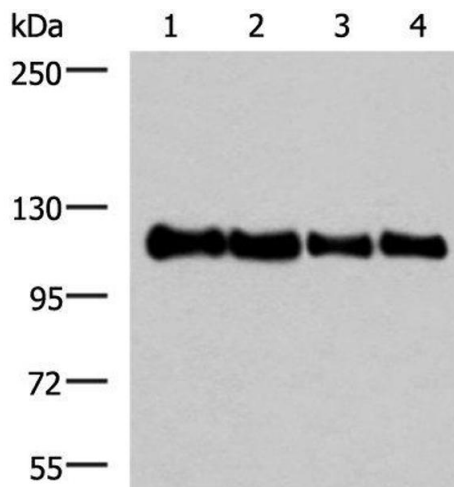
Storage: -20 °C

Storage Comment: Store at -20°C. Avoid freeze / thaw cycles.



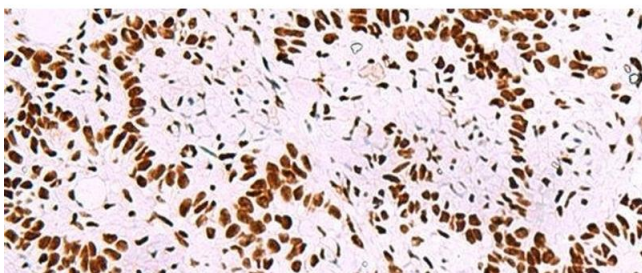
Immunohistochemistry (Paraffin-embedded Sections)

Image 1. Immunohistochemistry of paraffin-embedded Human esophagus cancer tissue using TRIM28(pospho-Ser824) Polyclonal Antibody at dilution of 1:50(x200)



Western Blotting

Image 2. Western blot analysis of 293T HEPG2 HeLa and TM4 cell lysates using TRIM28(pospho-Ser824) Polyclonal Antibody at dilution of 1:1000



Immunohistochemistry (Paraffin-embedded Sections)

Image 3. Immunohistochemistry of paraffin-embedded Human ovarian cancer tissue using TRIM28(pospho-Ser824) Polyclonal Antibody at dilution of 1:50(x200)