

Datasheet for ABIN7245413

anti-CBP antibody**2** Images[Go to Product page](#)

Overview

Quantity:	200 µL
Target:	CBP (CREBBP)
Reactivity:	Human, Mouse, Rat
Host:	Rabbit
Clonality:	Polyclonal
Conjugate:	This CBP antibody is un-conjugated
Application:	Immunohistochemistry (IHC), ELISA

Product Details

Immunogen:	Synthetic peptide of human CREBBP
Isotype:	IgG
Characteristics:	Polyclonal Antibody
Purification:	Antigen affinity purification

Target Details

Target:	CBP (CREBBP)
Alternative Name:	CREBBP (CREBBP Products)
Background:	This gene is ubiquitously expressed and is involved in the transcriptional coactivation of many different transcription factors. First isolated as a nuclear protein that binds to cAMP-response element binding protein (CREB), this gene is now known to play critical roles in embryonic development, growth control, and homeostasis by coupling chromatin remodeling to

Target Details

transcription factor recognition. The protein encoded by this gene has intrinsic histone acetyltransferase activity and also acts as a scaffold to stabilize additional protein interactions with the transcription complex. This protein acetylates both histone and non-histone proteins. This protein shares regions of very high sequence similarity with protein p300 in its bromodomain, cysteine-histidine-rich regions, and histone acetyltransferase domain. Mutations in this gene cause Rubinstein-Taybi syndrome (RTS). Chromosomal translocations involving this gene have been associated with acute myeloid leukemia. Alternative splicing results in multiple transcript variants encoding different isoforms.

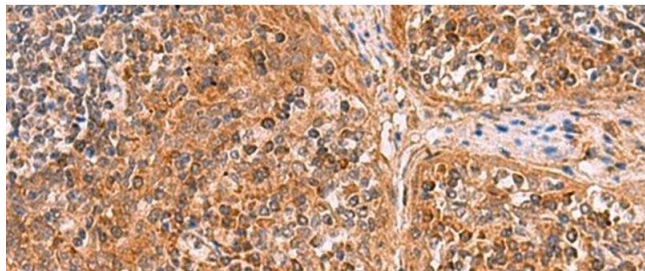
UniProt:	Q92793
Pathways:	TCR Signaling , Interferon-gamma Pathway , Stem Cell Maintenance , Chromatin Binding , Regulation of Lipid Metabolism by PPARalpha

Application Details

Application Notes:	IHC 1:30-1:150, ELISA 1:5000-1:10000
Restrictions:	For Research Use only

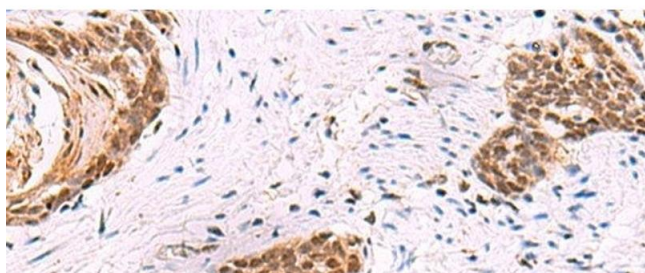
Handling

Format:	Liquid
Concentration:	1.02 mg/mL
Buffer:	PBS with 0.05 % Sodium azide and 40 % Glycerol, pH 7.4
Preservative:	Sodium azide
Precaution of Use:	This product contains Sodium azide: a POISONOUS AND HAZARDOUS SUBSTANCE which should be handled by trained staff only.
Storage:	-20 °C
Storage Comment:	Store at -20°C. Avoid freeze / thaw cycles.



Immunohistochemistry (Paraffin-embedded Sections)

Image 1. Immunohistochemistry of paraffin-embedded Human tonsil tissue using CREBBP Polyclonal Antibody at dilution of 1:35(x200)



Immunohistochemistry (Paraffin-embedded Sections)

Image 2. Immunohistochemistry of paraffin-embedded Human esophagus cancer tissue using CREBBP Polyclonal Antibody at dilution of 1:35(x200)