



Datasheet for ABIN7245422  
**anti-KBTBD11 antibody**



[Go to Product page](#)

1 Image

Overview

Quantity:	200 µL
Target:	KBTBD11
Reactivity:	Human, Mouse
Host:	Rabbit
Clonality:	Polyclonal
Conjugate:	This KBTBD11 antibody is un-conjugated
Application:	Western Blotting (WB), ELISA

Product Details

Immunogen:	Synthetic peptide of human KBTBD11
Isotype:	IgG
Characteristics:	Polyclonal Antibody
Purification:	Antigen affinity purification

Target Details

Target:	KBTBD11
Alternative Name:	KBTBD11 ( <a href="#">KBTBD11 Products</a> )
Background:	The function of this protein remains unknown.
Molecular Weight:	Observed_MW: Refer to figures Calculated_MW: 66 kDa

## Target Details

UniProt: [O94819](#)

## Application Details

Application Notes: WB 1:1000-1:5000, ELISA 1:5000-1:10000

Restrictions: For Research Use only

## Handling

Format: Liquid

Concentration: 2.88 mg/mL

Buffer: PBS with 0.05 % Sodium azide and 40 % Glycerol, pH 7.4

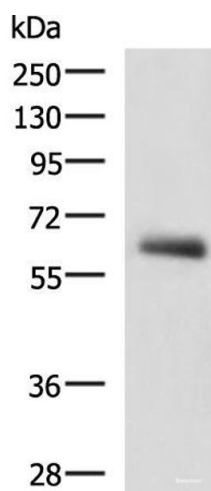
Preservative: Sodium azide

Precaution of Use: This product contains Sodium azide: a POISONOUS AND HAZARDOUS SUBSTANCE which should be handled by trained staff only.

Storage: -20 °C

Storage Comment: Store at -20°C. Avoid freeze / thaw cycles.

## Images



### Western Blotting

**Image 1.** Western blot analysis of Human metastatic papillary carcinoma(thyroid cancer) tissue lysate using KBTBD11 Polyclonal Antibody at dilution of 1:2300