



[Go to Product page](#)

Datasheet for ABIN7245440  
**anti-KCNK15 antibody**

2 Images

### Overview

Quantity:	200 µL
Target:	KCNK15
Reactivity:	Human
Host:	Rabbit
Clonality:	Polyclonal
Conjugate:	This KCNK15 antibody is un-conjugated
Application:	Western Blotting (WB), ELISA, Immunohistochemistry (IHC)

### Product Details

Immunogen:	Synthetic peptide of human KCNK15
Isotype:	IgG
Characteristics:	Polyclonal Antibody
Purification:	Antigen affinity purification

### Target Details

Target:	KCNK15
Alternative Name:	KCNK15 ( <a href="#">KCNK15 Products</a> )
Background:	<p>This gene encodes one of the members of the superfamily of potassium channel proteins containing two pore-forming P domains. The product of this gene has not been shown to be a functional channel, however, it may require other non-pore-forming proteins for activity.</p> <p>KCNK15 (Potassium Two Pore Domain Channel Subfamily K Member 15) is a Protein Coding</p>

## Target Details

---

gene. Among its related pathways are Neuropathic Pain-Signaling in Dorsal Horn Neurons and Sweet Taste Signaling. GO annotations related to this gene include potassium channel activity and potassium ion leak channel activity. An important paralog of this gene is KCNK9.

---

Molecular Weight: Observed\_MW: Refer to figures  
Calculated\_MW: 36 kDa

---

UniProt: [Q9H427](#)

## Application Details

---

Application Notes: WB 1:1000-1:5000, IHC 1:25-1:100, ELISA 1:5000-1:10000

---

Restrictions: For Research Use only

## Handling

---

Format: Liquid

---

Concentration: 1.26 mg/mL

---

Buffer: PBS with 0.05 % Sodium azide and 40 % Glycerol, pH 7.4

---

Preservative: Sodium azide

---

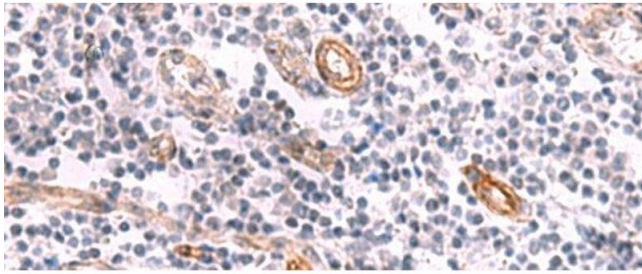
Precaution of Use: This product contains Sodium azide: a POISONOUS AND HAZARDOUS SUBSTANCE which should be handled by trained staff only.

---

Storage: -20 °C

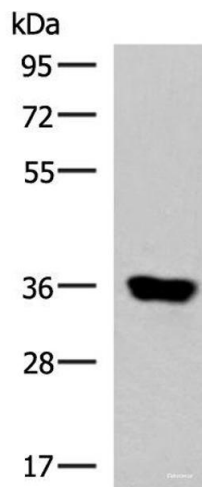
---

Storage Comment: Store at -20°C. Avoid freeze / thaw cycles.



### Immunohistochemistry (Paraffin-embedded Sections)

**Image 1.** Immunohistochemistry of paraffin-embedded Human tonsil tissue using KCNK15 Polyclonal Antibody at dilution of 1:45(x200)



### Western Blotting

**Image 2.** Western blot analysis of Human muscle tissue lysate using KCNK15 Polyclonal Antibody at dilution of 1:1000