

Datasheet for ABIN7245461

**anti-KCTD7 antibody**

3 Images

[Go to Product page](#)

## Overview

Quantity:	200 µL
Target:	KCTD7
Reactivity:	Human, Rat, Mouse
Host:	Rabbit
Clonality:	Polyclonal
Conjugate:	This KCTD7 antibody is un-conjugated
Application:	Western Blotting (WB), ELISA, Immunohistochemistry (IHC)

## Product Details

Immunogen:	Synthetic peptide of human KCTD7
Isotype:	IgG
Characteristics:	Polyclonal Antibody
Purification:	Antigen affinity purification

## Target Details

Target:	KCTD7
Alternative Name:	KCTD7 ( <a href="#">KCTD7 Products</a> )
Background:	KCTD7 (Potassium Channel Tetramerization Domain Containing 7) is a Protein Coding gene. Diseases associated with KCTD7 include Epilepsy, Progressive Myoclonic 3, With Or Without Intracellular Inclusions and Cln14 Disease. Among its related pathways are Neuropathic Pain-Signaling in Dorsal Horn Neurons and Innate Immune System. An important paralog of this

## Target Details

gene is KCTD14. This gene encodes a member of the potassium channel tetramerization domain-containing protein family. Family members are identified on a structural basis and contain an amino-terminal domain similar to the T1 domain present in the voltage-gated potassium channel. Mutations in this gene have been associated with progressive myoclonic epilepsy-3. Alternative splicing results in multiple transcript variants.

Molecular Weight: Observed\_MW: Refer to figures  
Calculated\_MW: 33 kDa

UniProt: [Q96MP8](#)

## Application Details

Application Notes: WB 1:1000-1:5000, IHC 1:50-1:300, ELISA 1:5000-1:10000

Restrictions: For Research Use only

## Handling

Format: Liquid

Concentration: 1.56 mg/mL

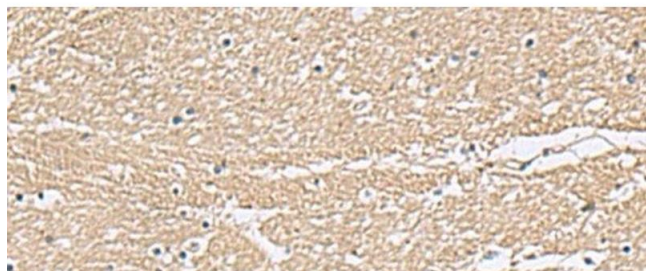
Buffer: PBS with 0.05 % Sodium azide and 40 % Glycerol, pH 7.4

Preservative: Sodium azide

Precaution of Use: This product contains Sodium azide: a POISONOUS AND HAZARDOUS SUBSTANCE which should be handled by trained staff only.

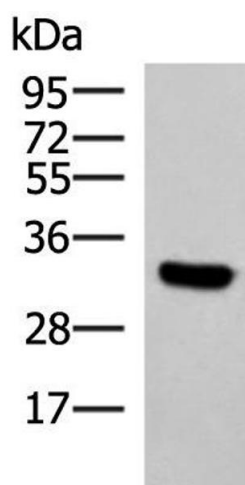
Storage: -20 °C

Storage Comment: Store at -20°C. Avoid freeze / thaw cycles.



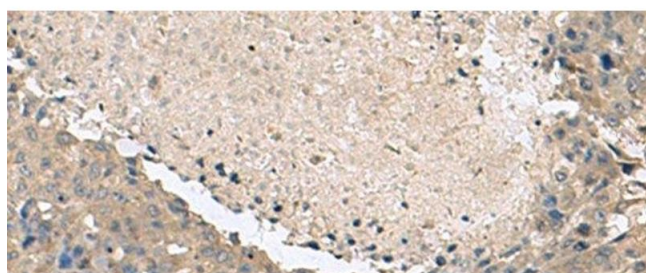
#### Immunohistochemistry (Paraffin-embedded Sections)

**Image 1.** Immunohistochemistry of paraffin-embedded Human brain tissue using KCTD7 Polyclonal Antibody at dilution of 1:55(x200)



#### Western Blotting

**Image 2.** Western blot analysis of Hela cell lysate using KCTD7 Polyclonal Antibody at dilution of 1:1200



#### Immunohistochemistry (Paraffin-embedded Sections)

**Image 3.** Immunohistochemistry of paraffin-embedded Human liver cancer tissue using KCTD7 Polyclonal Antibody at dilution of 1:55(x200)