



[Go to Product page](#)

Datasheet for ABIN7245482

anti-KHSRP antibody

2 Images

Overview

Quantity:	200 µL
Target:	KHSRP
Reactivity:	Human, Mouse, Rat
Host:	Rabbit
Clonality:	Polyclonal
Application:	Western Blotting (WB), ELISA, Immunohistochemistry (IHC)

Product Details

Immunogen:	Synthetic peptide of human KHSRP
Isotype:	IgG
Characteristics:	Polyclonal Antibody
Purification:	Antigen affinity purification

Target Details

Target:	KHSRP
Alternative Name:	KHSRP (KHSRP Products)
Background:	The KHSRP gene encodes a multifunctional RNA-binding protein implicated in a variety of cellular processes, including transcription, alternative pre-mRNA splicing, and mRNA localization. KHSRP (KH-Type Splicing Regulatory Protein) is a Protein Coding gene. Diseases associated with KHSRP include Ataxia, Cerebellar, Cayman Type. Among its related pathways are CDK-mediated phosphorylation and removal of Cdc6 and Gene Expression. GO annotations

Target Details

related to this gene include nucleic acid binding and RNA binding. An important paralog of this gene is FUBP1.

Molecular Weight: Observed_MW: Refer to figures
Calculated_MW: 73 kDa

UniProt: [Q92945](#)

Application Details

Application Notes: WB 1:1000-1:5000, IHC 1:50-1:300, ELISA 1:5000-1:10000

Restrictions: For Research Use only

Handling

Format: Liquid

Concentration: 1.38 mg/mL

Buffer: PBS with 0.05 % Sodium azide and 40 % Glycerol, pH 7.4

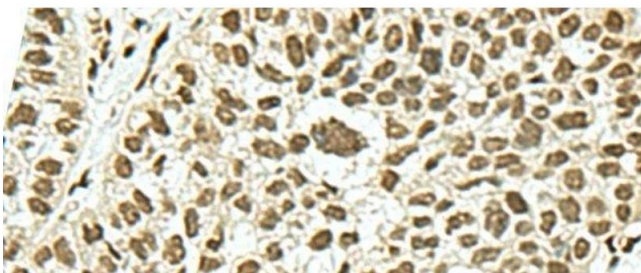
Preservative: Sodium azide

Precaution of Use: This product contains Sodium azide: a POISONOUS AND HAZARDOUS SUBSTANCE which should be handled by trained staff only.

Storage: -20 °C

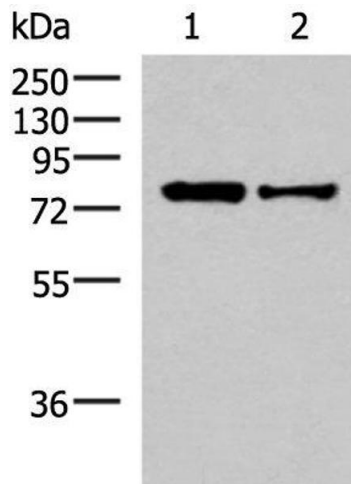
Storage Comment: Store at -20°C. Avoid freeze / thaw cycles.

Images



Immunohistochemistry (Paraffin-embedded Sections)

Image 1. Immunohistochemistry of paraffin-embedded Human esophagus cancer tissue using KHSRP Polyclonal Antibody at dilution of 1:50(x200)



Western Blotting

Image 2. Western blot analysis of HepG2 and Hela cell lysates using KHSRP Polyclonal Antibody at dilution of 1:1000