



## Datasheet for ABIN7245554 anti-CEACAM8 antibody



[Go to Product page](#)

### 2 Images

#### Overview

Quantity:	200 µL
Target:	CEACAM8
Reactivity:	Human
Host:	Rabbit
Clonality:	Polyclonal
Conjugate:	This CEACAM8 antibody is un-conjugated
Application:	Immunohistochemistry (IHC), ELISA

#### Product Details

Immunogen:	Fusion protein of human CEACAM8
Isotype:	IgG
Characteristics:	Polyclonal Antibody
Purification:	Antigen affinity purification

#### Target Details

Target:	CEACAM8
Alternative Name:	CEACAM8 ( <a href="#">CEACAM8 Products</a> )
Background:	Carcinoembryonic antigen-related cell adhesion molecule 8(CEACAM8) also known as CD66b(Cluster of Differentiation 66b), is a human gene. In neutrophils, the CEACAM8 gene is primarily detected in the secondary granules within the cytoplasm, but it can also be found in lower amounts on the plasma membrane. The amount of CD67 on the plasma membrane is

## Target Details

up-regulated upon granulocyte activation. CD67 has been located on the surface of neutrophilic and eosinophilic granulocytes at late stages of differentiation.

UniProt: [P31997](#)

## Application Details

Application Notes: IHC 1:30-1:150, ELISA 1:5000-1:10000

Restrictions: For Research Use only

## Handling

Format: Liquid

Concentration: 0.4 mg/mL

Buffer: PBS with 0.05 % Sodium azide and 40 % Glycerol, pH 7.4

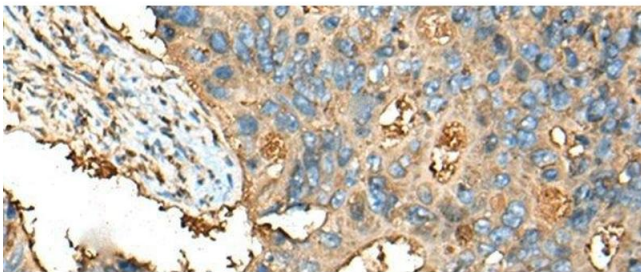
Preservative: Sodium azide

Precaution of Use: This product contains Sodium azide: a POISONOUS AND HAZARDOUS SUBSTANCE which should be handled by trained staff only.

Storage: -20 °C

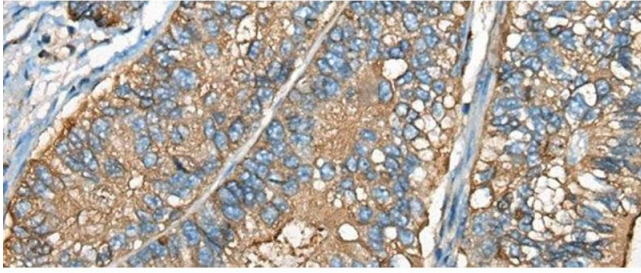
Storage Comment: Store at -20°C. Avoid freeze / thaw cycles.

## Images



### Immunohistochemistry (Paraffin-embedded Sections)

**Image 1.** Immunohistochemistry of paraffin-embedded Human colorectal cancer tissue using CEACAM8 Polyclonal Antibody at dilution of 1:30(x200)



### Immunohistochemistry (Paraffin-embedded Sections)

**Image 2.** Immunohistochemistry of paraffin-embedded Human gastric cancer tissue using CEACAM8 Polyclonal Antibody at dilution of 1:30(x200)