

Datasheet for ABIN7245560

anti-CLEC4D antibody**2** Images[Go to Product page](#)

Overview

Quantity:	200 µL
Target:	CLEC4D
Reactivity:	Human
Host:	Rabbit
Clonality:	Polyclonal
Conjugate:	This CLEC4D antibody is un-conjugated
Application:	ELISA, Western Blotting (WB), Immunohistochemistry (IHC)

Product Details

Immunogen:	Fusion protein of human CLEC4D
Isotype:	IgG
Characteristics:	Polyclonal Antibody
Purification:	Antigen affinity purification

Target Details

Target:	CLEC4D
Alternative Name:	CLEC4D (CLEC4D Products)
Background:	This gene encodes a member of the C-type lectin/C-type lectin-like domain (CTL/CTLD) superfamily. Members of this family share a common protein fold and have diverse functions, such as cell adhesion, cell-cell signalling, glycoprotein turnover, and roles in inflammation and immune response. This gene is closely linked to other CTL/CTLD superfamily members on

Target Details

chromosome 12p13 in the natural killer gene complex region.

Molecular Weight: Observed_MW: Refer to figures
Calculated_MW: 25 kDa

UniProt: [Q8WXI8](#)

Application Details

Application Notes: WB 1:500-1:2000, IHC 1:50-1:300, ELISA 1:5000-1:10000

Restrictions: For Research Use only

Handling

Format: Liquid

Concentration: 0.96 mg/mL

Buffer: PBS with 0.05 % Sodium azide and 40 % Glycerol, pH 7.4

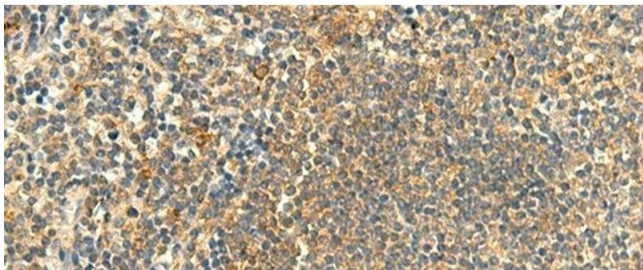
Preservative: Sodium azide

Precaution of Use: This product contains Sodium azide: a POISONOUS AND HAZARDOUS SUBSTANCE which should be handled by trained staff only.

Storage: -20 °C

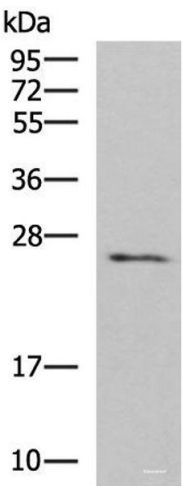
Storage Comment: Store at -20°C. Avoid freeze / thaw cycles.

Images



Immunohistochemistry (Paraffin-embedded Sections)

Image 1. Immunohistochemistry of paraffin-embedded Human tonsil tissue using CLEC4D Polyclonal Antibody at dilution of 1:50(x200)



Western Blotting

Image 2. Western blot analysis of Human fetal brain tissue lysate using CLEC4D Polyclonal Antibody at dilution of 1:700