

Datasheet for ABIN7245650

anti-ESM1 antibody**2** Images[Go to Product page](#)

Overview

Quantity:	200 µL
Target:	ESM1
Reactivity:	Human
Host:	Rabbit
Clonality:	Polyclonal
Conjugate:	This ESM1 antibody is un-conjugated
Application:	Immunohistochemistry (IHC), ELISA

Product Details

Immunogen:	Fusion protein of human ESM1
Isotype:	IgG
Characteristics:	Polyclonal Antibody
Purification:	Antigen affinity purification

Target Details

Target:	ESM1
Alternative Name:	ESM1 (ESM1 Products)
Background:	This gene encodes a secreted protein which is mainly expressed in the endothelial cells in human lung and kidney tissues. The expression of this gene is regulated by cytokines, suggesting that it may play a role in endothelium-dependent pathological disorders. The transcript contains multiple polyadenylation and mRNA instability signals. Two transcript

Target Details

variants encoding different isoforms have been found for this gene.

UniProt: [Q9NQ30](#)

Pathways: [Growth Factor Binding](#)

Application Details

Application Notes: IHC 1:50-1:300, ELISA 1:5000-1:10000

Restrictions: For Research Use only

Handling

Format: Liquid

Concentration: 0.9 mg/mL

Buffer: PBS with 0.05 % Sodium azide and 40 % Glycerol, pH 7.4

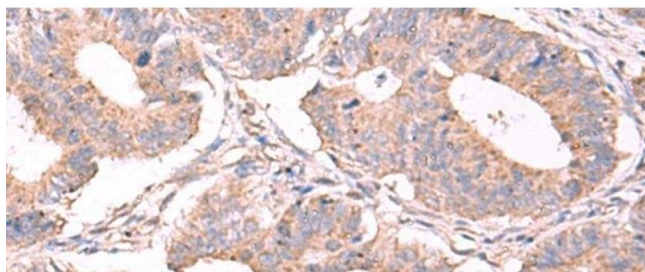
Preservative: Sodium azide

Precaution of Use: This product contains Sodium azide: a POISONOUS AND HAZARDOUS SUBSTANCE which should be handled by trained staff only.

Storage: -20 °C

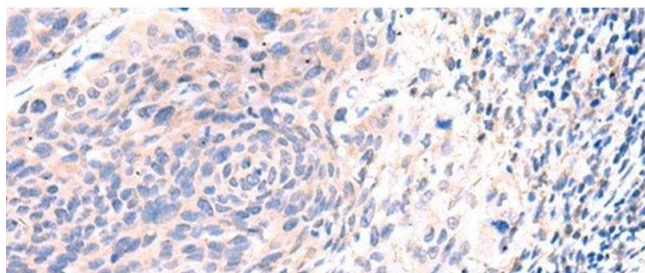
Storage Comment: Store at -20°C. Avoid freeze / thaw cycles.

Images



Immunohistochemistry (Paraffin-embedded Sections)

Image 1. Immunohistochemistry of paraffin-embedded Human colorectal cancer tissue using ESM1 Polyclonal Antibody at dilution of 1:50(x200)



Immunohistochemistry (Paraffin-embedded Sections)

Image 2. Immunohistochemistry of paraffin-embedded Human cervical cancer tissue using ESM1 Polyclonal Antibody at dilution of 1:50(x200)