

Datasheet for ABIN7245680

anti-REG1A antibody[Go to Product page](#)**1** Image

Overview

Quantity:	200 µL
Target:	REG1A
Reactivity:	Human
Host:	Rabbit
Clonality:	Polyclonal
Conjugate:	This REG1A antibody is un-conjugated
Application:	Western Blotting (WB), ELISA

Product Details

Immunogen:	Fusion protein of human REG1A
Isotype:	IgG
Characteristics:	Polyclonal Antibody
Purification:	Antigen affinity purification

Target Details

Target:	REG1A
Alternative Name:	REG1A (REG1A Products)
Background:	This gene is a type I subclass member of the Reg gene family. The Reg gene family is a multigene family grouped into four subclasses, types I, II, III and IV, based on the primary structures of the encoded proteins. This gene encodes a protein that is secreted by the exocrine pancreas. It is associated with islet cell regeneration and diabetogenesis and may be

Target Details

involved in pancreatic lithogenesis. Reg family members REG1B, REGL, PAP and this gene are tandemly clustered on chromosome 2p12 and may have arisen from the same ancestral gene by gene duplication.

Molecular Weight: Observed_MW: Refer to figures
Calculated_MW: 19 kDa

UniProt: [P05451](#)

Application Details

Application Notes: WB 1:500-1:2000, ELISA 1:5000-1:10000

Restrictions: For Research Use only

Handling

Format: Liquid

Concentration: 0.8 mg/mL

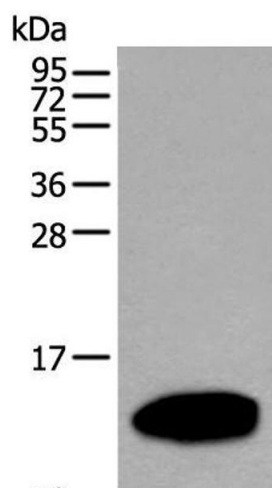
Buffer: PBS with 0.05 % Sodium azide and 40 % Glycerol, pH 7.4

Preservative: Sodium azide

Precaution of Use: This product contains Sodium azide: a POISONOUS AND HAZARDOUS SUBSTANCE which should be handled by trained staff only.

Storage: -20 °C

Storage Comment: Store at -20°C. Avoid freeze / thaw cycles.



Western Blotting

Image 1. Western blot analysis of Human pancreas tissue lysate using REG1A Polyclonal Antibody at dilution of 1:500